

LEA Name : MORRISVILLE BOROUGH SD
Address : 550 W Palmer St
Morrisville , PA 19067

County : Bucks
AUN Number : 122097203
LEA Type : SD

Annual Financial Report
Accuracy Certification Statement

For Fiscal Year Ending
6/30/2016

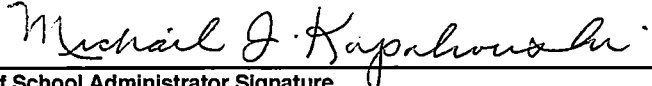
Pennsylvania Department of Education
&

Office of Comptroller Operations

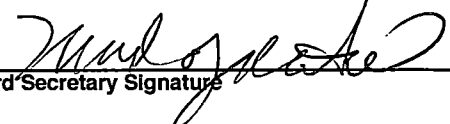
PDE-2056: Intermediate Unit

PDE-2057: School District, AVTS/CTC, Charter School,
and Special Program Jointure

CERTIFICATION: By signing this page I agree that the electronic data submitted is a complete and accurate statement of the financial operations and status of the local education agency for the fiscal year. It has been prepared in accordance with generally accepted accounting principles and established Commonwealth of PA reporting guidelines.


Chief School Administrator Signature

4/19/17
Date


Board Secretary Signature

4/19/17
Date

Jason B Harris

Contact Person

jharris@mv.org

Contact Person E-mail Address

(215)736-5932

Ext :

Contact Person Telephone Number

Contact Person Fax Number

Audit Certification
Annual Financial Report:
For Fiscal Year Ending **6/30/2016**
(Pursuant to PA School Code Section 218(b))

LEA Name : Morrisville Borough SD
AUN Number : 122097203
County : Bucks

Audit Certification Due:
12/31/2016

This certification is applicable to:

☒ Orig. Annual Financial Report submitted to
Comptroller Operations: 11/22/16
Date

☐ Annual Financial Report revisions submitted on: _____
Date

Auditing Firm:

BBD, LLP.

Auditor Contact Name:

Carl Hogan

Auditor Phone:

215-567-7770 x 6027

Auditor E-mail:

chogan@bbdcpa.com

CERTIFICATION: By signing this page I agree that the financial statements of the school have been properly audited as noted above pursuant to Article XXIV, and in the auditor's professional opinion, the Annual Financial Report (PDE-2057) submitted on the date referenced is materially consistent with the audited financial statements.

Chief School Administrator

Michael J. Kugala
Signature

Date

11/28/16

Board Secretary

[Signature]
Signature

Date

11/17/16

Jason B Harris

Contact Person

jharris@mv.org

Contact Person E-mail Address

(215)736-5932

Ext :

Contact Person Telephone Number

Contact Person Fax Number

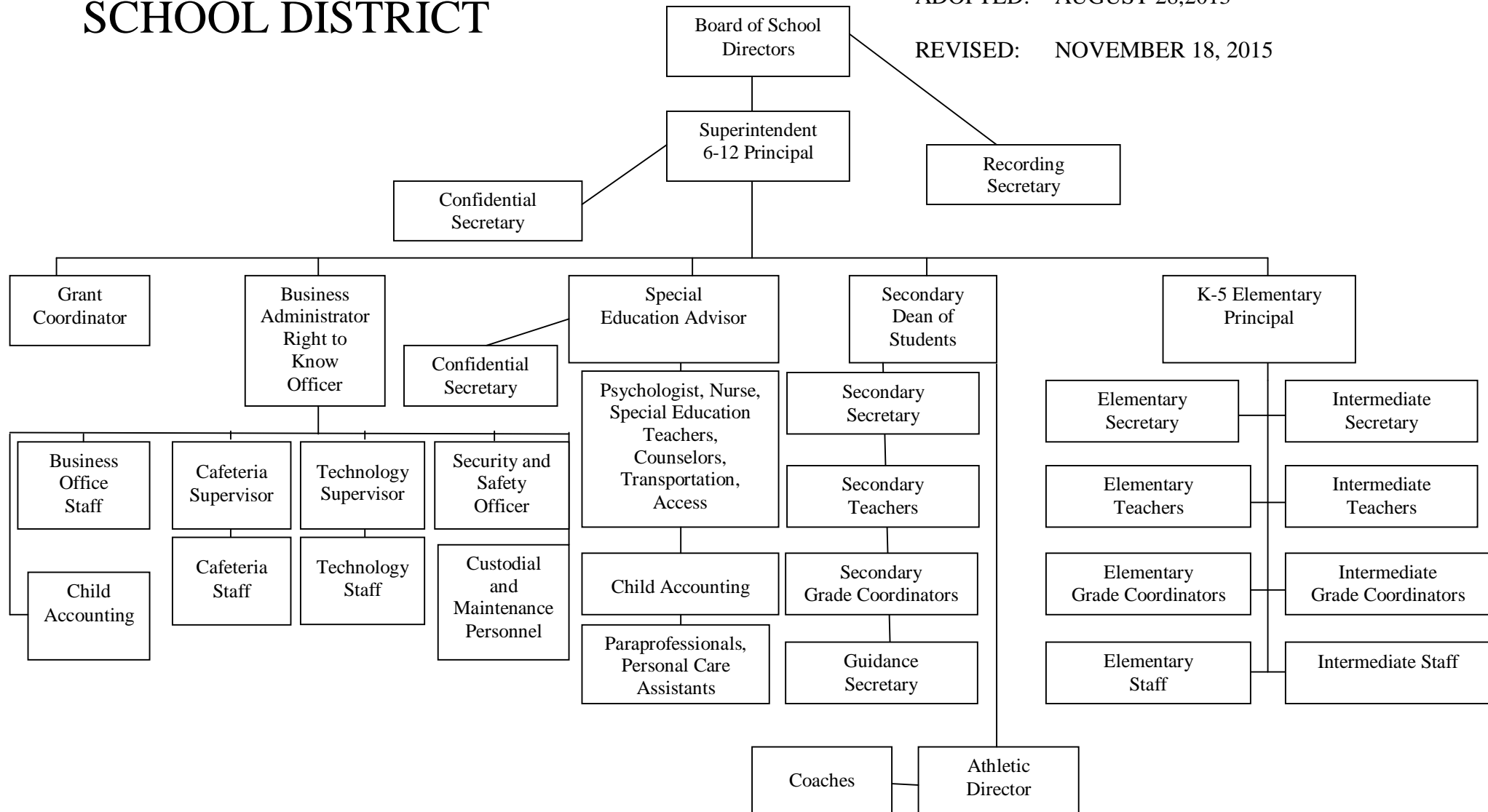
MORRISVILLE BOROUGH SCHOOL DISTRICT

SECTION: LOCAL BOARD PROCEDURES

TITLE: ORGANIZATION CHART

ADOPTED: AUGUST 28, 2013

REVISED: NOVEMBER 18, 2015



Val Number	Description	Justification
12206	<p>REG - Fund 32: Current Year AFR Beginning Fund Balance must equal Prior Year AFR Ending Fund Balance. Justifications to this error must fully explain the situation that prompted a fund balance restatement. "Auditor Adjustment" is not a sufficient justification.</p> <p>REG Fund 32, Beg Fund Bal: \$113,533.00 PY Ending Fund Balance: \$69,203.00</p>	<p>PRIOR YEAR FUND BALANCE WAS INPUTTED INCORRECTLY BETWEEN FUND 32 AND FUND 39</p>
12207	<p>REG - Fund 39: Current Year AFR Beginning Fund Balance must equal Prior Year AFR Ending Fund Balance. Justifications to this error must fully explain the situation that prompted a fund balance restatement. "Auditor Adjustment" is not a sufficient justification.</p> <p>REG Fund 39, Beg Fund Bal: \$567.00 PY Ending Fund Balance: \$44,897.00</p>	<p>PRIOR YEAR FUND BALANCE WAS INPUTTED INCORRECTLY BETWEEN FUND 32 AND FUND 39</p>
30680	<p>Revenue Detail: Current Tax Revenue amount cannot exceed 30% variance from prior year amount. Correct the data or enter a justification.</p> <p>6153, Current AFR Rev Detail: \$154,582.00 6153, Prior AFR Rev Detail: \$104,345.62</p>	<p>INCREASE DUE TO INCREASED SALES OF REAL ESTATE</p>
42420	<p>Expenditure Detail: Total current year 2700-513 expenditure varies from prior year by 10%. Correct the data or enter a justification.</p> <p>2700-513, AFR Exp Detail: \$87,664.00 2700-513, PY AFR Amount: \$73,062.79</p>	<p>INCREASE IN THE COST OF TRANSPORTATION</p>
50410	<p>SESS - 2140 Psychological Services: SESS Schedule amounts for Special Education vary from prior year by 40% or more. Correct the data or enter a justification.</p> <p>SESS Schedule 2140: \$11,075.00 Prior Year SESS Schedule 2140: \$29,593.00</p>	<p>SCHEDULE HAS BEEN UPDATED TO REFLECT CURRENT SPECIAL EDUCATION ENROLLMENT COUNTS.</p>
50450	<p>SESS - 2350 Legal and Accounting Services: SESS Schedule amounts for Special Education vary from prior year by 40% or more. Correct the data or enter a justification.</p> <p>SESS Schedule 2350: \$12,242.00 Prior Year SESS Schedule 2350: \$45,631.21</p>	<p>SCHEDULE HAS BEEN UPDATED TO REFLECT CURRENT SPECIAL EDUCATION ENROLLMENT COUNTS.</p>
50460	<p>SESS - 2420 Medical Services: SESS Schedule amounts for Special Education vary from prior year by 40% or more. Correct the data or enter a justification.</p> <p>SESS Schedule 2420: \$585.00 Prior Year SESS Schedule 2420: \$315.15</p>	<p>SCHEDULE HAS BEEN UPDATED TO REFLECT CURRENT SPECIAL EDUCATION ENROLLMENT COUNTS.</p>

50480 SESS - 2700 Student Transportation Services: SESS Schedule amounts for Special Education vary from prior year by 40% or more. Correct the data or enter a justification.

 SESS Schedule 2700: \$81,810.00
 Prior Year SESS Schedule 2700: \$261,203.38

SCHEDULE HAS BEEN UPDATED TO REFLECT CURRENT SPECIAL EDUCATION ENROLLMENT COUNTS.

LEA : 122097203 Morrisville Borough SD

Printed 5/8/2017 3:59:37 PM

Amounts Expressed in Whole Dollars		<u>General Fund</u> <u>(10)</u>	<u>Public Purpose Trust</u> <u>(27)</u>	<u>Other Compt Approved</u> <u>(28)</u>	<u>Athletic / Activity</u> <u>(29)</u>	<u>Capital Reserve (690.</u> <u>1850)</u> <u>(31)</u>
Assets And Deferred Outflows Of Resources						
Assets						
0100	Cash and Cash Equivalents	1,613,987				
0110	Investments	1,984,000				
0120	Taxes Receivable	761,823				
0130	Due From Other Funds	34,075				
0141	Due From Other Governments	620,119				
0142	State Revenue Receivable					
0143	Federal Revenue Receivable					
0145	Other Intergovernmental Revenue Receivable					
0146	Due from Primary Government					
0147	Due from Component Unit					
0150	Other Receivables	23,318				
0170	Inventories					
0180	Prepaid Expenses (Expenditures)					
0190	Other Current Assets					
Total Assets		\$5,037,322				
0910	Deferred Outflows of Resources					
Total Assets And Deferred Outflows Of Resources		\$5,037,322				

LEA : 122097203 Morrisville Borough SD

Printed 5/8/2017 3:59:37 PM

Amounts Expressed in Whole Dollars		<u>Capital Reserve (1431</u> <u>(32)</u>	<u>Other Capital Projects</u> <u>Fund</u> <u>(39)</u>	<u>Debt Service</u> <u>(40)</u>	<u>Permanent</u> <u>(90)</u>	<u>Total Governmental</u> <u>Funds</u>
Assets And Deferred Outflows Of Resources						
Assets						
0100	Cash and Cash Equivalents	113,707	567			1,728,261
0110	Investments					1,984,000
0120	Taxes Receivable					761,823
0130	Due From Other Funds					34,075
0141	Due From Other Governments					620,119
0142	State Revenue Receivable					
0143	Federal Revenue Receivable					
0145	Other Intergovernmental Revenue Receivable					
0146	Due from Primary Government					
0147	Due from Component Unit					
0150	Other Receivables					23,318
0170	Inventories					
0180	Prepaid Expenses (Expenditures)					
0190	Other Current Assets					
Total Assets		\$113,707	\$567			\$5,151,596
0910	Deferred Outflows of Resources					
Total Assets And Deferred Outflows Of Resources		\$113,707	\$567			\$5,151,596

Amounts Expressed in Whole Dollars		<u>General Fund</u> <u>(10)</u>	<u>Public Purpose Trust</u> <u>(27)</u>	<u>Other Compt Approved</u> <u>(28)</u>	<u>Athletic / Activity</u> <u>(29)</u>	<u>Capital Reserve (690.</u> <u>1850)</u> <u>(31)</u>
Liabilities And Deferred Inflows Of Resources And Fund Balances						
Liabilities						
0400	Due to Other Funds	666				
0411	Due to Other Governments					
0412	Due to Primary Government					
0413	Due to Component Unit					
0420	Accounts Payable	700,471				
0430	Contracts Payable					
0440	Current Portion of Long-Term Debt					
0450	Short-Term Payables					
0461	Accrued Salaries and Benefits	938,109				
0462	Payroll Deductions and Withholding					
0480	Unearned Revenues					
0490	Other Current Liabilities	14,261				
Total Liabilities		\$1,653,507				
0950	Deferred Inflows of Resources	714,563				
Fund Balances						
0810	Nonspendable Fund Balance					
0820	Restricted Fund Balance					
0830	Committed Fund Balance	2,573,252				
0840	Assigned Fund Balance					
0850	Unassigned Fund Balance	96,000				
Total Fund Balances		\$2,669,252				
Total Liabilities, Deferred Inflows Of Resources And Fund Balances		\$5,037,322				

LEA : 122097203 Morrisville Borough SD

Printed 5/8/2017 3:59:37 PM

Amounts Expressed in Whole Dollars	<u>Capital Reserve (1431)</u> <u>(32)</u>	<u>Other Capital Projects</u> <u>Fund</u> <u>(39)</u>	<u>Debt Service</u> <u>(40)</u>	<u>Permanent</u> <u>(90)</u>	<u>Total Governmental</u> <u>Funds</u>
Liabilities And Deferred Inflows Of Resources And Fund Balances					
Liabilities					
0400 Due to Other Funds					666
0411 Due to Other Governments					
0412 Due to Primary Government					
0413 Due to Component Unit					
0420 Accounts Payable					700,471
0430 Contracts Payable					
0440 Current Portion of Long-Term Debt					
0450 Short-Term Payables					
0461 Accrued Salaries and Benefits					938,109
0462 Payroll Deductions and Withholding					
0480 Unearned Revenues					
0490 Other Current Liabilities					14,261
Total Liabilities					\$1,653,507
0950 Deferred Inflows of Resources					714,563
Fund Balances					
0810 Nonspendable Fund Balance					
0820 Restricted Fund Balance	113,707	567			114,274
0830 Committed Fund Balance					2,573,252
0840 Assigned Fund Balance					
0850 Unassigned Fund Balance					96,000
Total Fund Balances	\$113,707	\$567			\$2,783,526
Total Liabilities, Deferred Inflows Of Resources And Fund Balances	\$113,707	\$567			\$5,151,596

Amounts Expressed in Whole Dollars		<u>General Fund</u> <u>(10)</u>	<u>Public Purpose Trust</u> <u>(27)</u>	<u>Other Compt Approved</u> <u>(28)</u>	<u>Athletic / Activity</u> <u>(29)</u>	<u>Capital Reserve (690.</u> <u>1850)</u> <u>(31)</u>
Revenues						
6000	Revenue from Local Sources	11,999,864				
7000	Revenue from State Sources	5,863,398				
8000	Revenue from Federal Sources	750,263				
Total Revenues		\$18,613,525				
Expenditures						
1000	Instruction	12,844,284				
2000	Support Services	4,492,029				
3000	Operation of Non-Instructional Services	460,765				
4000	Facilities Acquisition, Construction and Improvement Services					
5110	Debt Service	814,036				
5130	Refund of Prior Year Revenues / Receipts	8,907				
5140	Short-Term Borrowing – Interest and Costs					
Total Expenditures		\$18,620,021				
Excess (Deficiency) Of Revenues Over Expenditures		(\$6,496)				
Other Financing Sources (Uses)						
9110	Face Value of Bonds Issued					
9120	Proceeds from Refunding of Bonds					
9130	Bond Premiums					
9200	Proceeds from Extended-Term Financing					
9300	Interfund Transfers - IN					
9400	Sale of or Compensation for Loss of Fixed Assets					
9710	Transfers from Component Units					
9720	Transfers from Primary Governments					
9910	Other Financing Sources Not Listed in the 9000 Series					
9990	Insurance Recoveries					
5120	Debt Service – Refunded Bonds					
5150	Bond Discounts					
5200	Interfund Transfers – Out	666				
5300	Transfers Out to Component Units/Primary Governments					
Total Other Financing Sources (Uses)		(\$666)				

LEA : 122097203 Morrisville Borough SD

Printed 5/8/2017 3:59:39 PM

Amounts Expressed in Whole Dollars		<u>Capital Reserve (1431)</u> <u>(32)</u>	<u>Other Capital Projects</u> <u>Fund</u> <u>(39)</u>	<u>Debt Service</u> <u>(40)</u>	<u>Permanent</u> <u>(90)</u>	<u>Total Governmental</u> <u>Funds</u>
Revenues						
6000	Revenue from Local Sources	174				12,000,038
7000	Revenue from State Sources					5,863,398
8000	Revenue from Federal Sources					750,263
Total Revenues		\$174				\$18,613,699
Expenditures						
1000	Instruction					12,844,284
2000	Support Services					4,492,029
3000	Operation of Non-Instructional Services					460,765
4000	Facilities Acquisition, Construction and Improvement Services					
5110	Debt Service					814,036
5130	Refund of Prior Year Revenues / Receipts					8,907
5140	Short-Term Borrowing – Interest and Costs					
Total Expenditures						\$18,620,021
Excess (Deficiency) Of Revenues Over Expenditures		\$174				(\$6,322)
Other Financing Sources (Uses)						
9110	Face Value of Bonds Issued					
9120	Proceeds from Refunding of Bonds					
9130	Bond Premiums					
9200	Proceeds from Extended-Term Financing					
9300	Interfund Transfers - IN					
9400	Sale of or Compensation for Loss of Fixed Assets					
9710	Transfers from Component Units					
9720	Transfers from Primary Governments					
9910	Other Financing Sources Not Listed in the 9000 Series					
9990	Insurance Recoveries					
5120	Debt Service – Refunded Bonds					
5150	Bond Discounts					
5200	Interfund Transfers – Out					666
5300	Transfers Out to Component Units/Primary Governments					
Total Other Financing Sources (Uses)						(\$666)

Amounts Expressed in Whole Dollars		<u>General Fund</u> <u>(10)</u>	<u>Public Purpose Trust</u> <u>(27)</u>	<u>Other Compt Approved</u> <u>(28)</u>	<u>Athletic / Activity</u> <u>(29)</u>	<u>Capital Reserve</u> <u>(690.</u> <u>1850)</u> <u>(31)</u>
Special And Extraordinary Items						
9920	Special Items – Gains					
9930	Extraordinary Items – Gains					
5520	Special Items – Losses					
5530	Extraordinary Items – Losses					
Net Change In Fund Balances		(\$7,162)				
Fund Balance						
0001	Fund Balance - Beginning of Fiscal Year	2,676,414				
Fund Balance - End Of Year		\$2,669,252				

Amounts Expressed in Whole Dollars		<u>Capital Reserve (1431)</u> <u>(32)</u>	<u>Other Capital Projects</u> <u>Fund</u> <u>(39)</u>	<u>Debt Service</u> <u>(40)</u>	<u>Permanent</u> <u>(90)</u>	<u>Total Governmental</u> <u>Funds</u>
Special And Extraordinary Items						
9920	Special Items – Gains					
9930	Extraordinary Items – Gains					
5520	Special Items – Losses					
5530	Extraordinary Items – Losses					
Net Change In Fund Balances		\$174				(\$6,988)
Fund Balance						
0001	Fund Balance - Beginning of Fiscal Year	113,533	567			2,790,514
Fund Balance - End Of Year		\$113,707	\$567			\$2,783,526

LEA : 122097203 Morrisville Borough SD

Printed 5/8/2017 3:59:40 PM

Amounts Expressed in Whole Dollars	Food Service (51)	Child Care Operations (52)	Other Enterprise (58)	TOTAL	Internal Service (60)
Assets And Deferred Outflows Of Resources					
Current Assets					
0100 Cash and Cash Equivalents	86,994			86,994	
0110 Investments					
0130 Due From Other Funds	666			666	
0141 Due From Other Governments	44,735			44,735	
0142 State Revenue Receivable					
0143 Federal Revenue Receivable					
0146 Due from Primary Government					
0147 Due from Component Unit					
0150 Other Receivables					
0170 Inventories	4,934			4,934	
0180 Prepaid Expenses (Expenditures)					219,266
0190 Other Current Assets					
Total Current Assets	\$137,329			\$137,329	\$219,266
Noncurrent Assets					
0211 Land					
0212 Site Improvements (Net)					
0220 Buildings and Building Improvements (Net)					
0230 Machinery, Equipment and Furniture (Net)	15,087			15,087	
0250 Construction in Progress					
0260 Long Term Prepayments					
0290 Other Noncurrent Assets					
Total Noncurrent Assets	\$15,087			\$15,087	
0910 Deferred Outflows of Resources					
Total Assets And Deferred Outflows Of Resources	\$152,416			\$152,416	\$219,266

Amounts Expressed in Whole Dollars	<u>Food Service</u> <u>(51)</u>	<u>Child Care</u> <u>Operations</u> <u>(52)</u>	<u>Other Enterprise</u> <u>(58)</u>	<u>TOTAL</u>	<u>Internal Service</u> <u>(60)</u>
Liabilities And Deferred Inflows Of Resources And Net Position					
Current Liabilities					
0400 Due to Other Funds	34,075			34,075	
0411 Due to Other Governments					
0413 Due to Component Unit					
0420 Accounts Payable	97,216			97,216	
0430 Contracts Payable					
0440 Current Portion of Long-Term Debt					
0450 Short-Term Payables					
0461 Accrued Salaries and Benefits					
0462 Payroll Deductions and Withholding					
0480 Unearned Revenues					
0490 Other Current Liabilities					57,564
Total Current Liabilities	\$131,291			\$131,291	\$57,564
Noncurrent Liabilities					
0510 Bonds Payable					
0520 Extended-Term Financing Agreements Payable					
0530 Lease-Purchase Obligations					
0540 Accumulated Compensated Absences					
0550 Authority Lease Obligations					
0560 Other Post-Employment Benefits (OPEB)					
0570 Net Pension Liability					
0599 Other Long-Term Liabilities					
Total Noncurrent Liabilities					
Total Liabilities	\$131,291			\$131,291	\$57,564
0950 Deferred Inflows of Resources					
Net Position					
0791 Invested in Capital Assets, Net of Related Debt	15,087			15,087	
0008 Restricted Net Position (0792 – 0798)					
0799 Unrestricted Net Position	6,038			6,038	161,702
Total Net Position	\$21,125			\$21,125	\$161,702
Total Liabilities And Deferred Inflows Of Resources And Net Position	\$152,416			\$152,416	\$219,266

Amounts Expressed in Whole Dollars	Food Service (51)	Child Care Operations (52)	Other Enterprise (58)	TOTAL	Internal Service (60)
Operating Revenues					
6600 Food Service Revenue	121,799			121,799	
0071 Charges for Services					1,164,577
0072 Other Operating Revenue					
Total Operating Revenues	\$121,799			\$121,799	\$1,164,577
Operating Expenses					
100 Personnel Services – Salaries	189,147			189,147	
200 Personnel Services – Employee Benefits	47,035			47,035	1,197,526
300 Purchased Professional and Technical Services					126,961
400 Purchased Property Services					
500 Other Purchased Services	39,446			39,446	
600 Supplies	176,772			176,772	
740 Depreciation	3,021			3,021	
810 Dues and Fees					
890 Miscellaneous Expenditures	179			179	
Total Operating Expenses	\$455,600			\$455,600	\$1,324,487
Operating Income (Loss)	(\$333,801)			(\$333,801)	(\$159,910)
Non Operating Revenues (Expenses)					
6500 Earnings on Investments					
6920 Contributions and Donations from Private Sources					
6930 Gains or Losses on Sale of Fixed Assets					
6991 Refunds of a Prior Year Expenditure					
7000 Revenue from State Sources	13,613			13,613	
8000 Revenue from Federal Sources	302,299			302,299	
820 Claims and Judgments Against the LEA					
830 Interest					
TOTAL Non Operating Revenues (Expenses)	\$315,912			\$315,912	
Income (Loss) Before Contributions And Transfers	(\$17,889)			(\$17,889)	(\$159,910)

Amounts Expressed in Whole Dollars	<u>Food Service</u> <u>(51)</u>	<u>Child Care Operations</u> <u>(52)</u>	<u>Other Enterprise</u> <u>(58)</u>	<u>TOTAL</u>	<u>Internal Service</u> <u>(60)</u>
Contributions, Transfers, and Special and Extraordinary Items					
5200 Interfund Transfers – Out					
5300 Transfers Out to Component Units/Primary Governments					
5520 Special Items – Losses					
5530 Extraordinary Items – Losses					
9300 Interfund Transfers - IN	666			666	
9500 Capital Contributions					
9700 Transfers IN From Component Units/Primary Governments					
9920 Special Items – Gains					
9930 Extraordinary Items – Gains					
Change In Net Position	(\$17,223)			(\$17,223)	(\$159,910)
0002 Net Position - Beginning of Fiscal Year	38,348			38,348	321,612
0003 Accounting Changes / Residual Equity Transfers					
Net Position - End Of Year	\$21,125			\$21,125	\$161,702

LEA : 122097203 Morrisville Borough SD

Printed 5/8/2017 3:59:43 PM

Amounts Expressed in Whole Dollars	<u>Food Service</u> <u>(51)</u>	<u>Child Care Operations</u> <u>(52)</u>	<u>Other Enterprise</u> <u>(58)</u>	<u>TOTAL</u>	<u>Internal Service(60)</u>
Cash Flows From Operating Activities					
0011 Cash Receipts From Users	121,799			121,799	
0012 Cash Receipts From Assessments Made to Other Funds					1,326,352
0013 Cash Receipts From Earnings on Investments					
0014 Cash Receipts From Other Operating Revenue					
0015 Cash Payments To Employees For Services					
0016 Cash Payments For Insurance Claims					1,199,391
0017 Cash Payments To Suppliers For Goods and Services					
0018 Cash Payments For Other Operating Expenses	322,376			322,376	126,961
Net Cash Provided By (Used For) Operating Activities	(\$200,577)			(\$200,577)	\$0
Cash Flows From Non-Capital Financing Activities					
0021 Receipts From Local Sources - 6000	12,163			12,163	
0022 Receipts From State Sources - 7000	242,722			242,722	
0023 Receipts From Federal Sources -8000					
0024 Notes and Loans Received (Repaid)					
0025 Interest Paid on Notes/Loans - 5100-830					
0026 Operating Transfers In (Out)/Residual Equity Trans	666			666	
0027 Operating Transfers In (Out) Primary Government / Comp Unit					
0028 Receipts From Refund of Prior Year Expenditures - 6991					
0029 Special and Extraordinary Gains (losses)					
Net Cash Prov By (Used for) Non-Capital Financing Activities	\$255,551			\$255,551	
Cash Flows From Capital and Related Financing Activities					
0031 Payments For Fac Acq, Const, and Imp - 4000					
0032 Gain / (Loss) on Sale of Fixed Assets - 6930					
0033 Proceeds From Extended Term Financing - 9200					
0034 Principal Paid on Financing Agreements					
0035 Interest Paid on Financing Agreements - 5100-830					
0036 (Inc) Dec in Contributed Capital					
Net Cash Prov By (Used for) Capital and Related Financing Activities					
Cash Flows From Investing Activities					
0041 Earnings on Investments - 6500					
0042 Purchase of Inv Securities / Deposits to Inv Pools					
0043 Receipts From Investment Pool Withdrawals					
0044 Proceeds from Sale and Maturity of Inv Securities					
0045 Loans Received (Paid)					
Net Cash Prov By (Used for) Investing Activities					

LEA : 122097203 Morrisville Borough SD

Printed 5/8/2017 3:59:43 PM

	Food Service (51)	Child Care Operations (52)	Other Enterprise (58)	TOTAL	Internal Service (60)
Net Increase (Decrease) in Cash Flows	54,974			54,974	
0004 Cash and Cash Equivalents Beginning of Year	32,020			32,020	
Cash and Cash Equivalents at Year End	\$86,994			\$86,994	
Reconciliation of Operating Income (Loss) To Net Cash Provided by (Used For) Operating Activities					
0005 Operating Income (Loss) per REP	(333,801)			(333,801)	(159,910)
Adjustments					
0051 Depreciation and Net Amortization	3,021			3,021	
0052 Provision for Uncollectible Accounts					
0053 Other Adjustments	25,642			25,642	
Effect of Changes in Assets, Liabilities, Deferred Outflows and Deferred Inflows					
0054 (Inc) Dec In Accounts Receivable (0120-0150)					
0055 Advances to Other Funds (0160)	58,680			58,680	
0056 (Inc) Dec in Inventories (0170)					
0057 (Inc) Dec in Prepaid Expenses (0180)	(30)			(30)	161,775
0058 (Inc) Dec in Other Current or Noncurrent Assets					
0064 Deferred Outflows (0910)					
0059 Inc (Dec) in Accounts Payable (0400-0450)	11,836			11,836	
0060 Inc (Dec) in Accrued Salaries/Benefits (0461)					
0065 Inc (Dec) in Net Pension Liabilities (0570)					
0066 Inc (Dec) in Other Postemp Benefit Oblig (0560)					
0061 Inc (Dec) in Payroll Deductions/Withholding (0462)					
0062 Inc (Dec) in Unearned Revenue (0480)					
0063 Inc (Dec) in Other Current or Noncurrent Liabilities	34,075			34,075	(1,865)
0067 Deferred Inflows (0950)					
Total Adjustments	\$133,224			\$133,224	\$159,910
Cash Provided By (Used for) Total	(\$200,577)			(\$200,577)	

COMBINED STATEMENT OF CASH FLOWS
SCHEDULE OF NONCASH INVESTING, CAPITAL, AND FINANCING ACTIVITIES

Explanation of Transaction and Balance Sheet Effect	Amount
USDA DONATED COMMODITIES	25,642
Total	\$25,642

LEA : 122097203 Morrisville Borough SD

Printed 5/8/2017 3:59:44 PM

Amounts Expressed in Whole Dollars	<u>Private Purpose Trust</u> <u>(71)</u>	<u>Investment Trust</u> <u>(72)</u>	<u>Pension Trust</u> <u>(73)</u>	<u>Activity</u> <u>(81)</u>
Assets And Deferred Outflows Of Resources				
Assets				
0100 Cash and Cash Equivalents	25,987			35,387
0110 Investments				
0130 Due From Other Funds				
0147 Due from Component Unit				
0150 Other Receivables				
0170 Inventories				
0180 Prepaid Expenses (Expenditures)				
0190 Other Current Assets				
0220 Buildings and Building Improvements (Net)				
0230 Machinery, Equipment and Furniture (Net)				
Total Assets	\$25,987			\$35,387
0910 Deferred Outflows of Resources				
Total Assets And Deferred Outflows Of Resources	\$25,987			\$35,387

LEA : 122097203 Morrisville Borough SD

Printed 5/8/2017 3:59:44 PM

Amounts Expressed in Whole Dollars		<u>Other Agency</u> <u>(89)</u>	<u>Discrete Component Units</u> <u>(98)</u>	<u>Discrete Component Units</u> <u>(99)</u>	<u>Total Fiduciary Funds</u>
Assets And Deferred Outflows Of Resources					
Assets					
0100	Cash and Cash Equivalents				61,374
0110	Investments				
0130	Due From Other Funds				
0147	Due from Component Unit				
0150	Other Receivables				
0170	Inventories				
0180	Prepaid Expenses (Expenditures)				
0190	Other Current Assets				
0220	Buildings and Building Improvements (Net)				
0230	Machinery, Equipment and Furniture (Net)				
Total Assets					\$61,374
0910	Deferred Outflows of Resources				
Total Assets And Deferred Outflows Of Resources					\$61,374

LEA : 122097203 Morrisville Borough SD

Printed 5/8/2017 3:59:44 PM

Amounts Expressed in Whole Dollars	<u>Private Purpose Trust</u> <u>(71)</u>	<u>Investment Trust</u> <u>(72)</u>	<u>Pension Trust</u> <u>(73)</u>	<u>Activity</u> <u>(81)</u>
Liabilities, Deferred Inflows Of Resources And Net Position				
Liabilities				
0400 Due to Other Funds				
0411 Due to Other Governments				
0412 Due to Primary Government				
0413 Due to Component Unit				
0420 Accounts Payable				
0430 Contracts Payable				
0450 Short-Term Payables				
0461 Accrued Salaries and Benefits				
0462 Payroll Deductions and Withholding				
0480 Unearned Revenues				
0490 Other Current Liabilities				35,387
Total Liabilities				\$35,387
0950 Deferred Inflows of Resources				
Net Position				
0791 Invested in Capital Assets, Net of Related Debt				
0009 Restricted Net Position (0792 – 0798)	25,987			
0799 Unrestricted Net Position				
Total Net Position	\$25,987			
Total Liabilities, Deferred Inflows Of Resources And Net Position	\$25,987			\$35,387

LEA : 122097203 Morrisville Borough SD

Printed 5/8/2017 3:59:44 PM

Amounts Expressed in Whole Dollars		<u>Other Agency</u> <u>(89)</u>	<u>Discrete Component Units</u> <u>(98)</u>	<u>Discrete Component Units</u> <u>(99)</u>	<u>Total Fiduciary Funds</u>
Liabilities, Deferred Inflows Of Resources And Net Position					
Liabilities					
0400	Due to Other Funds				
0411	Due to Other Governments				
0412	Due to Primary Government				
0413	Due to Component Unit				
0420	Accounts Payable				
0430	Contracts Payable				
0450	Short-Term Payables				
0461	Accrued Salaries and Benefits				
0462	Payroll Deductions and Withholding				
0480	Unearned Revenues				
0490	Other Current Liabilities				35,387
Total Liabilities					\$35,387
0950	Deferred Inflows of Resources				
Net Position					
0791	Invested in Capital Assets, Net of Related Debt				
0009	Restricted Net Position (0792 – 0798)				25,987
0799	Unrestricted Net Position				
Total Net Position					\$25,987
Total Liabilities, Deferred Inflows Of Resources And Net Position					\$61,374

LEA : 122097203 Morrisville Borough SD

Printed 5/8/2017 3:59:44 PM

Amounts Expressed in Whole Dollars	<u>Private Purpose Trust</u> <u>(71)</u>	<u>Investment Trust</u> <u>(72)</u>	<u>Pension Trust</u> <u>(73)</u>	<u>Discrete Component</u> <u>Units</u> <u>(98)</u>	<u>Discrete Component</u> <u>Units</u> <u>(99)</u>	<u>Total Fiduciary</u> <u>Funds</u>
Additions						
0091 Gifts and Contributions	2,294					2,294
0092 Other Additions						
Deductions						
0093 Scholarships Awarded	6,190					6,190
0094 Other Deductions						
Change In Net Position	(\$3,896)					(\$3,896)
0006 Net Position – Beginning of Fiscal Year	29,883					29,883
0007 Net Position Held in Trust for Pension Benefits						
Net Position - End of Fiscal Year	\$25,987					\$25,987

	Revenue Reported In Current Year	Current Year Tax Accrual	Prior Year Tax Accrual	Taxes Collected In Current Year
Revenue from Local Sources				
6111 Current Real Estate Taxes	10,885,265.00			10,885,265.00
6113 Public Utility Realty Taxes	16,142.00			16,142.00
6153 Current Act 511 Real Estate Transfer Taxes	157,568.00	16,705.00	13,719.00	154,582.00
6411 Delinquent Real Estate Taxes	549,518.00	94,750.00	81,449.00	536,217.00
6500 Earnings on Investments	22,582.00			
6700 Revenues from LEA Activities	2,033.00			
6832 Federal IDEA Revenue Received as Pass Through	203,940.00			
6910 Rentals	16,158.00			
6999 Other Revenues Not Specified Above	146,658.00			
TOTAL Revenue from Local Sources	\$11,999,864.00	\$111,455.00	\$95,168.00	\$11,592,206.00

	Revenue Reported In Current Year			
Revenue from State Sources				
7110 Basic Education Funding	3,060,137.00			
7160 Tuition for Orphans Subsidy	75,038.00			
7271 Special Education funds for School-Aged Pupils	696,365.00			
7292 Pre-K Counts	427,443.00			
7311 Pupil Transportation Subsidy	32,643.00			
7330 Health Services (Medical, Dental, Nurse, Act 25)	21,735.00			
7340 State Property Tax Reduction Allocation	386,664.00			
7360 Safe Schools	21,670.00			
7501 PA Accountability Grants	116,944.00			
7505 Ready to Learn Block Grant	2,663.00			
7810 State Share of Social Security and Medicare Taxes	225,007.00			
7820 State Share of Retirement Contributions	797,089.00			
TOTAL Revenue from State Sources	\$5,863,398.00			

	Revenue Reported In Current Year			
<u>Revenue from Federal Sources</u>				
8514 NCLB, Title I - Improving the Academic Achievement of the Disadvantaged	155,454.00			
8515 NCLB, Title II - Preparing, Training and Recruiting High Quality Teachers and Principals	71,805.00			
8516 NCLB, Title III - Language Instruction for Limited English Proficient and Immigrant Students	23,856.00			
8517 NCLB, Title IV - 21St Century Schools	460,082.00			
8810 School-Based Access Medicaid Reimbursement Program (SBAP) Reimbursements (Access)	39,066.00			
TOTAL Revenue from Federal Sources	\$750,263.00			
TOTAL FROM ALL SOURCES	\$18,613,525.00	\$111,455.00	\$95,168.00	\$11,592,206.00

Revenue from Local Sources	11,999,864.00
Revenue from State Sources	5,863,398.00
Revenue from Federal Sources	750,263.00
Other Financing Sources	
TOTAL FROM ALL SOURCES	\$18,613,525.00

LEA : 122097203 Morrisville Borough SD

Printed 5/8/2017 3:59:47 PM

General Fund (10)

1000 Instruction	Total
100 <u>Personnel Services – Salaries</u>	
100 Personnel Services – Salaries	5,539,365.00
Total Personnel Services – Salaries	\$5,539,365.00
200 <u>Personnel Services – Employee Benefits</u>	
210 Group Insurance – Contracted Provider	399.00
220 Social Security Contributions	426,511.00
230 PSERS Retirement Contributions	1,359,058.00
240 Tuition Reimbursement	44,086.00
250 Unemployment Compensation	29,336.00
260 Workers' Compensation	47,959.00
270 Group Insurance – Self-Insurance	936,273.00
290 Other Current Employee Benefits	1,800.00
Total Personnel Services – Employee Benefits	\$2,845,422.00
300 <u>Purchased Professional and Technical Services</u>	
310 Official / Administrative Services	90,867.00
322 Professional Educational Services – Ius	2,291,613.00
329 Professional Educational Services – Other	97,174.00
330 Other Professional Services	23,546.00
340 Technical Services	38,169.00
Total Purchased Professional and Technical Services	\$2,541,369.00
400 <u>Purchased Property Services</u>	
440 Rentals	38,098.00
Total Purchased Property Services	\$38,098.00
500 <u>Other Purchased Services</u>	
510 Student Transportation Services	425.00
530 Communications	9,067.00
561 Tuition To Other School Districts Within the State	393,135.00
562 Tuition To Pennsylvania Charter Schools	589,120.00
564 Tuition To Career and Technology Centers	400,445.00
567 Tuition To Approved Private Schools (APS) and PA Chartered Schools for the Deaf and Blind	99,015.00
568 Tuition To Private Residential Rehabilitative Institutions (PRRI) [In-State] and Detention Centers	151,602.00
580 Travel	1,930.00
599 Other Miscellaneous Purchased Services	14,564.00
Total Other Purchased Services	\$1,659,303.00
600 <u>Supplies</u>	
610 General Supplies	91,094.00
630 Food	8,789.00
640 Books and Periodicals	113,118.00
Total Supplies	\$213,001.00
700 <u>Property</u>	
750 Equipment – Original and Additional	3,230.00
Total Property	\$3,230.00

LEA : 122097203 Morrisville Borough SD

Printed 5/8/2017 3:59:47 PM

General Fund (10)		
1000 Instruction		<u>Total</u>
800	<u>Other Objects</u>	
890	Miscellaneous Expenditures	4,496.00
Total Other Objects		\$4,496.00
Total 1000 Instruction		\$12,844,284.00

LEA : 122097203 Morrisville Borough SD

Printed 5/8/2017 3:59:47 PM

General Fund (10)				
1100 Regular Programs – Elementary / Secondary	<u>Elementary</u>	<u>Secondary</u>	<u>Federal</u>	<u>Total</u>
100 <u>Personnel Services – Salaries</u>				
100 Personnel Services – Salaries	1,459,394.00	1,879,483.00	474,668.00	3,813,545.00
Total Personnel Services – Salaries	\$1,459,394.00	\$1,879,483.00	\$474,668.00	\$3,813,545.00
200 <u>Personnel Services – Employee Benefits</u>				
220 Social Security Contributions	105,122.00	141,778.00	48,734.00	295,634.00
230 PSERS Retirement Contributions	367,793.00	491,959.00	41,660.00	901,412.00
240 Tuition Reimbursement	9,393.00	34,503.00		43,896.00
250 Unemployment Compensation	10,238.00	19,098.00		29,336.00
260 Workers' Compensation	17,371.00	17,456.00	2,195.00	37,022.00
270 Group Insurance – Self-Insurance	298,519.00	326,853.00	48,495.00	673,867.00
290 Other Current Employee Benefits	900.00	900.00		1,800.00
Total Personnel Services – Employee Benefits	\$809,336.00	\$1,032,547.00	\$141,084.00	\$1,982,967.00
300 <u>Purchased Professional and Technical Services</u>				
310 Official / Administrative Services	29,979.00	60,888.00		90,867.00
329 Professional Educational Services – Other		12,800.00	84,374.00	97,174.00
330 Other Professional Services			23,546.00	23,546.00
Total Purchased Professional and Technical Services	\$29,979.00	\$73,688.00	\$107,920.00	\$211,587.00
400 <u>Purchased Property Services</u>				
440 Rentals	4,615.00	21,283.00	12,200.00	38,098.00
Total Purchased Property Services	\$4,615.00	\$21,283.00	\$12,200.00	\$38,098.00
500 <u>Other Purchased Services</u>				
530 Communications		9,067.00		9,067.00
561 Tuition To Other School Districts Within the State		27,753.00		27,753.00
562 Tuition To Pennsylvania Charter Schools	125,476.00	203,409.00		328,885.00
580 Travel		1,002.00	411.00	1,413.00
599 Other Miscellaneous Purchased Services			14,564.00	14,564.00
Total Other Purchased Services	\$125,476.00	\$241,231.00	\$14,975.00	\$381,682.00
600 <u>Supplies</u>				
610 General Supplies	21,995.00	39,980.00	10,369.00	72,344.00
630 Food		17.00		17.00
640 Books and Periodicals	97,717.00	13,180.00		110,897.00
Total Supplies	\$119,712.00	\$53,177.00	\$10,369.00	\$183,258.00
700 <u>Property</u>				
750 Equipment – Original and Additional		2,131.00		2,131.00
Total Property		\$2,131.00		\$2,131.00
800 <u>Other Objects</u>				
890 Miscellaneous Expenditures			4,496.00	4,496.00
Total Other Objects			\$4,496.00	\$4,496.00
Total 1100 Regular Programs – Elementary / Secondary	\$2,548,512.00	\$3,303,540.00	\$765,712.00	\$6,617,764.00

LEA : 122097203 Morrisville Borough SD

Printed 5/8/2017 3:59:47 PM

General Fund (10)				
1110 Regular Programs	<u>Elementary</u>	<u>Secondary</u>	<u>Federal</u>	<u>Total</u>
100 <u>Personnel Services – Salaries</u>				
100 Personnel Services – Salaries	1,459,394.00	1,879,483.00		3,338,877.00
Total Personnel Services – Salaries	\$1,459,394.00	\$1,879,483.00		\$3,338,877.00
200 <u>Personnel Services – Employee Benefits</u>				
220 Social Security Contributions	105,122.00	141,778.00		246,900.00
230 PSERS Retirement Contributions	367,793.00	491,959.00		859,752.00
240 Tuition Reimbursement	9,393.00	34,503.00		43,896.00
250 Unemployment Compensation	10,238.00	19,098.00		29,336.00
260 Workers' Compensation	17,371.00	17,456.00		34,827.00
270 Group Insurance – Self-Insurance	298,519.00	326,853.00		625,372.00
290 Other Current Employee Benefits	900.00	900.00		1,800.00
Total Personnel Services – Employee Benefits	\$809,336.00	\$1,032,547.00		\$1,841,883.00
300 <u>Purchased Professional and Technical Services</u>				
310 Official / Administrative Services	29,979.00	60,888.00		90,867.00
329 Professional Educational Services – Other		12,800.00		12,800.00
Total Purchased Professional and Technical Services	\$29,979.00	\$73,688.00		\$103,667.00
400 <u>Purchased Property Services</u>				
440 Rentals	4,615.00	21,283.00		25,898.00
Total Purchased Property Services	\$4,615.00	\$21,283.00		\$25,898.00
500 <u>Other Purchased Services</u>				
530 Communications		9,067.00		9,067.00
561 Tuition To Other School Districts Within the State		27,753.00		27,753.00
562 Tuition To Pennsylvania Charter Schools	125,476.00	203,409.00		328,885.00
580 Travel		1,002.00		1,002.00
Total Other Purchased Services	\$125,476.00	\$241,231.00		\$366,707.00
600 <u>Supplies</u>				
610 General Supplies	21,995.00	39,980.00		61,975.00
630 Food		17.00		17.00
640 Books and Periodicals	97,717.00	13,180.00		110,897.00
Total Supplies	\$119,712.00	\$53,177.00		\$172,889.00
700 <u>Property</u>				
750 Equipment – Original and Additional		2,131.00		2,131.00
Total Property		\$2,131.00		\$2,131.00
Total 1110 Regular Programs	\$2,548,512.00	\$3,303,540.00		\$5,852,052.00

LEA : 122097203 Morrisville Borough SD

Printed 5/8/2017 3:59:47 PM

General Fund (10)				
1190 Federally-Funded Regular Programs	Elementary	Secondary	Federal	Total
100 <u>Personnel Services – Salaries</u>				
100 Personnel Services – Salaries			474,668.00	474,668.00
Total Personnel Services – Salaries			\$474,668.00	\$474,668.00
200 <u>Personnel Services – Employee Benefits</u>				
220 Social Security Contributions			48,734.00	48,734.00
230 PSERS Retirement Contributions			41,660.00	41,660.00
260 Workers' Compensation			2,195.00	2,195.00
270 Group Insurance – Self-Insurance			48,495.00	48,495.00
Total Personnel Services – Employee Benefits			\$141,084.00	\$141,084.00
300 <u>Purchased Professional and Technical Services</u>				
329 Professional Educational Services – Other			84,374.00	84,374.00
330 Other Professional Services			23,546.00	23,546.00
Total Purchased Professional and Technical Services			\$107,920.00	\$107,920.00
400 <u>Purchased Property Services</u>				
440 Rentals			12,200.00	12,200.00
Total Purchased Property Services			\$12,200.00	\$12,200.00
500 <u>Other Purchased Services</u>				
580 Travel			411.00	411.00
599 Other Miscellaneous Purchased Services			14,564.00	14,564.00
Total Other Purchased Services			\$14,975.00	\$14,975.00
600 <u>Supplies</u>				
610 General Supplies			10,369.00	10,369.00
Total Supplies			\$10,369.00	\$10,369.00
800 <u>Other Objects</u>				
890 Miscellaneous Expenditures			4,496.00	4,496.00
Total Other Objects			\$4,496.00	\$4,496.00
Total 1190 Federally-Funded Regular Programs			\$765,712.00	\$765,712.00

LEA : 122097203 Morrisville Borough SD

Printed 5/8/2017 3:59:47 PM

General Fund (10)				
1200 Special Programs – Elementary / Secondary	<u>Elementary</u>	<u>Secondary</u>	<u>Federal</u>	<u>Total</u>
100 <u>Personnel Services – Salaries</u>				
100 Personnel Services – Salaries	634,863.00	902,172.00	3,202.00	1,540,237.00
Total Personnel Services – Salaries	\$634,863.00	\$902,172.00	\$3,202.00	\$1,540,237.00
200 <u>Personnel Services – Employee Benefits</u>				
220 Social Security Contributions	47,753.00	68,779.00	245.00	116,777.00
230 PSERS Retirement Contributions	162,408.00	245,579.00	827.00	408,814.00
260 Workers’ Compensation	2,551.00	6,630.00		9,181.00
270 Group Insurance – Self-Insurance	55,475.00	190,214.00		245,689.00
Total Personnel Services – Employee Benefits	\$268,187.00	\$511,202.00	\$1,072.00	\$780,461.00
300 <u>Purchased Professional and Technical Services</u>				
322 Professional Educational Services – Ius	917,088.00	760,953.00	377,122.00	2,055,163.00
340 Technical Services		38,169.00		38,169.00
Total Purchased Professional and Technical Services	\$917,088.00	\$799,122.00	\$377,122.00	\$2,093,332.00
500 <u>Other Purchased Services</u>				
561 Tuition To Other School Districts Within the State	330.00	365,052.00		365,382.00
562 Tuition To Pennsylvania Charter Schools		260,235.00		260,235.00
567 Tuition To Approved Private Schools (APS) and PA Chartered Schools for the Deaf and Blind		99,015.00		99,015.00
568 Tuition To Private Residential Rehabilitative Institutions (PRRI) [In-State] and Detention Centers	6,591.00	145,011.00		151,602.00
580 Travel		307.00		307.00
Total Other Purchased Services	\$6,921.00	\$869,620.00		\$876,541.00
600 <u>Supplies</u>				
610 General Supplies	2,261.00	7,711.00		9,972.00
640 Books and Periodicals	1,080.00	1,141.00		2,221.00
Total Supplies	\$3,341.00	\$8,852.00		\$12,193.00
700 <u>Property</u>				
750 Equipment – Original and Additional		1,099.00		1,099.00
Total Property		\$1,099.00		\$1,099.00
Total 1200 Special Programs – Elementary / Secondary	\$1,830,400.00	\$3,092,067.00	\$381,396.00	\$5,303,863.00

LEA : 122097203 Morrisville Borough SD

Printed 5/8/2017 3:59:47 PM

General Fund (10)				
1210 Life Skills Support				
	<u>Elementary</u>	<u>Secondary</u>	<u>Federal</u>	<u>Total</u>
100 <u>Personnel Services – Salaries</u>				
100 Personnel Services – Salaries		129,679.00		129,679.00
Total Personnel Services – Salaries		\$129,679.00		\$129,679.00
200 <u>Personnel Services – Employee Benefits</u>				
220 Social Security Contributions		10,122.00		10,122.00
230 PSERS Retirement Contributions		46,208.00		46,208.00
260 Workers’ Compensation		1,152.00		1,152.00
270 Group Insurance – Self-Insurance		9,502.00		9,502.00
Total Personnel Services – Employee Benefits		\$66,984.00		\$66,984.00
300 <u>Purchased Professional and Technical Services</u>				
322 Professional Educational Services – Ius		15,036.00		15,036.00
Total Purchased Professional and Technical Services		\$15,036.00		\$15,036.00
500 <u>Other Purchased Services</u>				
561 Tuition To Other School Districts Within the State		293,167.00		293,167.00
Total Other Purchased Services		\$293,167.00		\$293,167.00
600 <u>Supplies</u>				
610 General Supplies		801.00		801.00
Total Supplies		\$801.00		\$801.00
Total 1210 Life Skills Support		\$505,667.00		\$505,667.00

LEA : 122097203 Morrisville Borough SD

Printed 5/8/2017 3:59:47 PM

General Fund (10)

1220 Sensory Support

	<u>Elementary</u>	<u>Secondary</u>	<u>Federal</u>	<u>Total</u>
300 <u>Purchased Professional and Technical Services</u>				
322 Professional Educational Services – lus	548,398.00	156,249.00		704,647.00
Total Purchased Professional and Technical Services	\$548,398.00	\$156,249.00		\$704,647.00
Total 1220 Sensory Support	\$548,398.00	\$156,249.00		\$704,647.00

LEA : 122097203 Morrisville Borough SD

Printed 5/8/2017 3:59:47 PM

General Fund (10)

1230 Emotional Support	Elementary	Secondary	Federal	Total
100 <u>Personnel Services – Salaries</u>				
100 Personnel Services – Salaries	237,192.00	144,466.00		381,658.00
Total Personnel Services – Salaries	\$237,192.00	\$144,466.00		\$381,658.00
200 <u>Personnel Services – Employee Benefits</u>				
220 Social Security Contributions	17,233.00	10,822.00		28,055.00
230 PSERS Retirement Contributions	61,292.00	37,240.00		98,532.00
260 Workers’ Compensation		1,178.00		1,178.00
270 Group Insurance – Self-Insurance	9,147.00	70,122.00		79,269.00
Total Personnel Services – Employee Benefits	\$87,672.00	\$119,362.00		\$207,034.00
300 <u>Purchased Professional and Technical Services</u>				
322 Professional Educational Services – Ius	292,874.00	449,038.00		741,912.00
Total Purchased Professional and Technical Services	\$292,874.00	\$449,038.00		\$741,912.00
500 <u>Other Purchased Services</u>				
561 Tuition To Other School Districts Within the State		71,885.00		71,885.00
562 Tuition To Pennsylvania Charter Schools		260,235.00		260,235.00
Total Other Purchased Services		\$332,120.00		\$332,120.00
Total 1230 Emotional Support	\$617,738.00	\$1,044,986.00		\$1,662,724.00

LEA : 122097203 Morrisville Borough SD

Printed 5/8/2017 3:59:47 PM

General Fund (10)				
1240 Academic Support	<u>Elementary</u>	<u>Secondary</u>	<u>Federal</u>	<u>Total</u>
100 <u>Personnel Services – Salaries</u>				
100 Personnel Services – Salaries	397,671.00	505,357.00	3,202.00	906,230.00
Total Personnel Services – Salaries	\$397,671.00	\$505,357.00	\$3,202.00	\$906,230.00
200 <u>Personnel Services – Employee Benefits</u>				
220 Social Security Contributions	30,520.00	38,125.00	245.00	68,890.00
230 PSERS Retirement Contributions	101,116.00	130,433.00	827.00	232,376.00
260 Workers’ Compensation	2,551.00	4,300.00		6,851.00
270 Group Insurance – Self-Insurance	46,328.00	90,942.00		137,270.00
Total Personnel Services – Employee Benefits	\$180,515.00	\$263,800.00	\$1,072.00	\$445,387.00
300 <u>Purchased Professional and Technical Services</u>				
322 Professional Educational Services – Ius			377,122.00	377,122.00
Total Purchased Professional and Technical Services			\$377,122.00	\$377,122.00
500 <u>Other Purchased Services</u>				
561 Tuition To Other School Districts Within the State	330.00			330.00
568 Tuition To Private Residential Rehabilitative Institutions (PRRI) [In-State] and Detention Centers	6,591.00			6,591.00
580 Travel		307.00		307.00
Total Other Purchased Services	\$6,921.00	\$307.00		\$7,228.00
600 <u>Supplies</u>				
610 General Supplies	2,261.00	1,323.00		3,584.00
640 Books and Periodicals	1,080.00	1,141.00		2,221.00
Total Supplies	\$3,341.00	\$2,464.00		\$5,805.00
700 <u>Property</u>				
750 Equipment – Original and Additional		1,099.00		1,099.00
Total Property		\$1,099.00		\$1,099.00
Total 1240 Academic Support	\$588,448.00	\$773,027.00	\$381,396.00	\$1,742,871.00

LEA : 122097203 Morrisville Borough SD

Printed 5/8/2017 3:59:47 PM

General Fund (10)				
1241 Learning Support – Public	<u>Elementary</u>	<u>Secondary</u>	<u>Federal</u>	<u>Total</u>
100 <u>Personnel Services – Salaries</u>				
100 Personnel Services – Salaries	376,858.00	486,005.00	3,202.00	866,065.00
Total Personnel Services – Salaries	\$376,858.00	\$486,005.00	\$3,202.00	\$866,065.00
200 <u>Personnel Services – Employee Benefits</u>				
220 Social Security Contributions	28,967.00	36,779.00	245.00	65,991.00
230 PSERS Retirement Contributions	95,771.00	125,516.00	827.00	222,114.00
260 Workers’ Compensation	2,551.00	4,300.00		6,851.00
270 Group Insurance – Self-Insurance	42,762.00	86,946.00		129,708.00
Total Personnel Services – Employee Benefits	\$170,051.00	\$253,541.00	\$1,072.00	\$424,664.00
300 <u>Purchased Professional and Technical Services</u>				
322 Professional Educational Services – Ius			377,122.00	377,122.00
Total Purchased Professional and Technical Services			\$377,122.00	\$377,122.00
500 <u>Other Purchased Services</u>				
561 Tuition To Other School Districts Within the State	330.00			330.00
568 Tuition To Private Residential Rehabilitative Institutions (PRRI) [In-State] and Detention Centers	6,591.00			6,591.00
580 Travel		307.00		307.00
Total Other Purchased Services	\$6,921.00	\$307.00		\$7,228.00
600 <u>Supplies</u>				
610 General Supplies	2,179.00	1,323.00		3,502.00
640 Books and Periodicals	783.00	1,141.00		1,924.00
Total Supplies	\$2,962.00	\$2,464.00		\$5,426.00
700 <u>Property</u>				
750 Equipment – Original and Additional		1,099.00		1,099.00
Total Property		\$1,099.00		\$1,099.00
Total 1241 Learning Support – Public	\$556,792.00	\$743,416.00	\$381,396.00	\$1,681,604.00

LEA : 122097203 Morrisville Borough SD

Printed 5/8/2017 3:59:47 PM

General Fund (10)

1243 Gifted Support

	Elementary	Secondary	Federal	Total
100 Personnel Services – Salaries				
100 Personnel Services – Salaries	20,813.00	19,352.00		40,165.00
Total Personnel Services – Salaries	\$20,813.00	\$19,352.00		\$40,165.00
200 Personnel Services – Employee Benefits				
220 Social Security Contributions	1,553.00	1,346.00		2,899.00
230 PSERS Retirement Contributions	5,345.00	4,917.00		10,262.00
270 Group Insurance – Self-Insurance	3,566.00	3,996.00		7,562.00
Total Personnel Services – Employee Benefits	\$10,464.00	\$10,259.00		\$20,723.00
600 Supplies				
610 General Supplies	82.00			82.00
640 Books and Periodicals	297.00			297.00
Total Supplies	\$379.00			\$379.00
Total 1243 Gifted Support	\$31,656.00	\$29,611.00		\$61,267.00

LEA : 122097203 Morrisville Borough SD

Printed 5/8/2017 3:59:47 PM

General Fund (10)

1270 Multi-Handicapped Support

	<u>Elementary</u>	<u>Secondary</u>	<u>Federal</u>	<u>Total</u>
300 <u>Purchased Professional and Technical Services</u>				
322 Professional Educational Services – lus		135,133.00		135,133.00
Total Purchased Professional and Technical Services		\$135,133.00		\$135,133.00
Total 1270 Multi-Handicapped Support		\$135,133.00		\$135,133.00

LEA : 122097203 Morrisville Borough SD

Printed 5/8/2017 3:59:47 PM

General Fund (10)				
1290 Special Programs - Other Support	<u>Elementary</u>	<u>Secondary</u>	<u>Federal</u>	<u>Total</u>
100 <u>Personnel Services – Salaries</u>				
100 Personnel Services – Salaries		122,670.00		122,670.00
Total Personnel Services – Salaries		\$122,670.00		\$122,670.00
200 <u>Personnel Services – Employee Benefits</u>				
220 Social Security Contributions		9,710.00		9,710.00
230 PSERS Retirement Contributions		31,698.00		31,698.00
270 Group Insurance – Self-Insurance		19,648.00		19,648.00
Total Personnel Services – Employee Benefits		\$61,056.00		\$61,056.00
300 <u>Purchased Professional and Technical Services</u>				
322 Professional Educational Services – Ius	75,816.00	5,497.00		81,313.00
340 Technical Services		38,169.00		38,169.00
Total Purchased Professional and Technical Services	\$75,816.00	\$43,666.00		\$119,482.00
500 <u>Other Purchased Services</u>				
567 Tuition To Approved Private Schools (APS) and PA Chartered Schools for the Deaf and Blind		99,015.00		99,015.00
568 Tuition To Private Residential Rehabilitative Institutions (PRRI) [In-State] and Detention Centers		145,011.00		145,011.00
Total Other Purchased Services		\$244,026.00		\$244,026.00
600 <u>Supplies</u>				
610 General Supplies		5,587.00		5,587.00
Total Supplies		\$5,587.00		\$5,587.00
Total 1290 Special Programs - Other Support	\$75,816.00	\$477,005.00		\$552,821.00

LEA : 122097203 Morrisville Borough SD

Printed 5/8/2017 3:59:47 PM

General Fund (10)

1300 Vocational Education	<u>Elementary</u>	<u>Secondary</u>	<u>Federal</u>	<u>Total</u>
100 <u>Personnel Services – Salaries</u>				
100 Personnel Services – Salaries		91,422.00		91,422.00
Total Personnel Services – Salaries		\$91,422.00		\$91,422.00
200 <u>Personnel Services – Employee Benefits</u>				
220 Social Security Contributions		6,743.00		6,743.00
230 PSERS Retirement Contributions		23,611.00		23,611.00
260 Workers’ Compensation		854.00		854.00
270 Group Insurance – Self-Insurance		9,467.00		9,467.00
Total Personnel Services – Employee Benefits		\$40,675.00		\$40,675.00
500 <u>Other Purchased Services</u>				
564 Tuition To Career and Technology Centers		400,445.00		400,445.00
580 Travel		210.00		210.00
Total Other Purchased Services		\$400,655.00		\$400,655.00
600 <u>Supplies</u>				
610 General Supplies		2,329.00		2,329.00
Total Supplies		\$2,329.00		\$2,329.00
Total 1300 Vocational Education		\$535,081.00		\$535,081.00

LEA : 122097203 Morrisville Borough SD

Printed 5/8/2017 3:59:47 PM

General Fund (10)

1400 Other Instructional Programs – Elementary / Secondary	<u>Elementary</u>	<u>Secondary</u>	<u>Federal</u>	<u>Total</u>
100 <u>Personnel Services – Salaries</u>				
100 Personnel Services – Salaries	3,925.00	(2,057.00)		1,868.00
Total Personnel Services – Salaries	\$3,925.00	(\$2,057.00)		\$1,868.00
200 <u>Personnel Services – Employee Benefits</u>				
210 Group Insurance – Contracted Provider	297.00	102.00		399.00
230 PSERS Retirement Contributions	1,014.00	359.00		1,373.00
270 Group Insurance – Self-Insurance		219.00		219.00
Total Personnel Services – Employee Benefits	\$1,311.00	\$680.00		\$1,991.00
600 <u>Supplies</u>				
610 General Supplies			20.00	20.00
Total Supplies			\$20.00	\$20.00
Total 1400 Other Instructional Programs – Elementary / Secondary	\$5,236.00	(\$1,377.00)	\$20.00	\$3,879.00

LEA : 122097203 Morrisville Borough SD

Printed 5/8/2017 3:59:47 PM

General Fund (10)

1430 Homebound Instruction	<u>Elementary</u>	<u>Secondary</u>	<u>Federal</u>	<u>Total</u>
100 Personnel Services – Salaries				
100 Personnel Services – Salaries	3,925.00	(2,057.00)		1,868.00
Total Personnel Services – Salaries	\$3,925.00	(\$2,057.00)		\$1,868.00
200 Personnel Services – Employee Benefits				
210 Group Insurance – Contracted Provider	297.00	102.00		399.00
230 PSERS Retirement Contributions	1,014.00	359.00		1,373.00
270 Group Insurance – Self-Insurance		219.00		219.00
Total Personnel Services – Employee Benefits	\$1,311.00	\$680.00		\$1,991.00
Total 1430 Homebound Instruction	\$5,236.00	(\$1,377.00)		\$3,859.00

LEA : 122097203 Morrisville Borough SD

Printed 5/8/2017 3:59:47 PM

General Fund (10)

1490 Additional Other Instructional Programs

Elementary

Secondary

Federal

Total

600 Supplies

610 General Supplies

20.00

20.00

Total Supplies				\$20.00	\$20.00
Total 1490 Additional Other Instructional Programs				\$20.00	\$20.00

LEA : 122097203 Morrisville Borough SD

Printed 5/8/2017 3:59:47 PM

General Fund (10)					
1800 Pre-Kindergarten		<u>Elementary</u>	<u>Secondary</u>	<u>Federal</u>	<u>Total</u>
100 <u>Personnel Services – Salaries</u>					
100 Personnel Services – Salaries					92,293.00
Total Personnel Services – Salaries					\$92,293.00
200 <u>Personnel Services – Employee Benefits</u>					
220 Social Security Contributions					7,357.00
230 PSERS Retirement Contributions					23,848.00
240 Tuition Reimbursement					190.00
260 Workers' Compensation					902.00
270 Group Insurance – Self-Insurance					7,031.00
Total Personnel Services – Employee Benefits					\$39,328.00
300 <u>Purchased Professional and Technical Services</u>					
322 Professional Educational Services – lus					236,450.00
Total Purchased Professional and Technical Services					\$236,450.00
500 <u>Other Purchased Services</u>					
510 Student Transportation Services					425.00
Total Other Purchased Services					\$425.00
600 <u>Supplies</u>					
610 General Supplies					6,429.00
630 Food					8,772.00
Total Supplies					\$15,201.00
Total 1800 Pre-Kindergarten					\$383,697.00

LEA : 122097203 Morrisville Borough SD

Printed 5/8/2017 3:59:47 PM

General Fund (10)				
1801 Pre-K Instruction	<u>Elementary</u>	<u>Secondary</u>	<u>Federal</u>	<u>Total</u>
100 <u>Personnel Services – Salaries</u>				
100 Personnel Services – Salaries				92,293.00
Total Personnel Services – Salaries				\$92,293.00
200 <u>Personnel Services – Employee Benefits</u>				
220 Social Security Contributions				7,357.00
230 PSERS Retirement Contributions				23,848.00
240 Tuition Reimbursement				190.00
260 Workers' Compensation				902.00
270 Group Insurance – Self-Insurance				7,031.00
Total Personnel Services – Employee Benefits				\$39,328.00
300 <u>Purchased Professional and Technical Services</u>				
322 Professional Educational Services – lus				236,450.00
Total Purchased Professional and Technical Services				\$236,450.00
600 <u>Supplies</u>				
610 General Supplies				6,429.00
630 Food				8,772.00
Total Supplies				\$15,201.00
Total 1801 Pre-K Instruction				\$383,272.00

LEA : 122097203 Morrisville Borough SD

Printed 5/8/2017 3:59:47 PM

General Fund (10)

1804 Pre-K Student Transportation	<u>Elementary</u>	<u>Secondary</u>	<u>Federal</u>	<u>Total</u>
500 <u>Other Purchased Services</u>				
510 Student Transportation Services				425.00
Total Other Purchased Services				\$425.00
Total 1804 Pre-K Student Transportation				\$425.00

LEA : 122097203 Morrisville Borough SD

Printed 5/8/2017 3:59:49 PM

General Fund (10)

2000 Support Services		<u>Total</u>
100 <u>Personnel Services – Salaries</u>		
100 Personnel Services – Salaries		1,557,736.00
Total Personnel Services – Salaries		\$1,557,736.00
200 <u>Personnel Services – Employee Benefits</u>		
210 Group Insurance – Contracted Provider		7,210.00
220 Social Security Contributions		124,497.00
230 PSERS Retirement Contributions		366,103.00
240 Tuition Reimbursement		2,104.00
260 Workers' Compensation		16,975.00
270 Group Insurance – Self-Insurance		285,580.00
Total Personnel Services – Employee Benefits		\$802,469.00
300 <u>Purchased Professional and Technical Services</u>		
310 Official / Administrative Services		351,281.00
322 Professional Educational Services – Ius		116,388.00
323 Professional Educational Services – Other Educational Agencies		477.00
324 Professional Educational Services – Employee Training and Development Services		11,839.00
329 Professional Educational Services – Other		35,070.00
330 Other Professional Services		48,057.00
340 Technical Services		89,289.00
390 Other Purchased Professional and Technical Services		45,085.00
Total Purchased Professional and Technical Services		\$697,486.00
400 <u>Purchased Property Services</u>		
410 Cleaning Services		140,815.00
420 Utility Services		165,537.00
430 Repairs and Maintenance Services		151,252.00
440 Rentals		15,518.00
460 Extermination Services		1,145.00
Total Purchased Property Services		\$474,267.00
500 <u>Other Purchased Services</u>		
513 Contracted Carriers		87,664.00
516 Student Transportation Services From the IU		294,686.00
520 Insurance – General		15,714.00
522 Automotive Liability Insurance		10,345.00
523 General Property and Liability Insurance		73,798.00
530 Communications		31,545.00
541 Advertising Related to Federal Grant Awards		1,945.00
550 Printing and Binding		1,614.00
580 Travel		1,891.00
595 IU Payments By Withholding		5,138.00
599 Other Miscellaneous Purchased Services		42,913.00
Total Other Purchased Services		\$567,253.00
600 <u>Supplies</u>		
610 General Supplies		93,867.00
620 Energy		28,387.00

LEA : 122097203 Morrisville Borough SD

Printed 5/8/2017 3:59:49 PM

General Fund (10)		
2000 Support Services		<u>Total</u>
600 <u>Supplies</u>		
640 Books and Periodicals	106,721.00	
Total Supplies	\$228,975.00	
700 <u>Property</u>		
750 Equipment – Original and Additional	142,098.00	
760 Equipment – Replacement	4,721.00	
Total Property	\$146,819.00	
800 <u>Other Objects</u>		
810 Dues and Fees	17,024.00	
Total Other Objects	\$17,024.00	
Total 2000 Support Services	\$4,492,029.00	

LEA : 122097203 Morrisville Borough SD

Printed 5/8/2017 3:59:49 PM

General Fund (10)				
2100 Support Services – Students	<u>Elementary</u>	<u>Secondary</u>	<u>Federal</u>	<u>Total</u>
100 <u>Personnel Services – Salaries</u>				
100 Personnel Services – Salaries	146,229.00	133,015.00		326,045.00
Total Personnel Services – Salaries	\$146,229.00	\$133,015.00		\$326,045.00
200 <u>Personnel Services – Employee Benefits</u>				
210 Group Insurance – Contracted Provider	1,230.00	2,448.00		7,210.00
220 Social Security Contributions	11,126.00	10,554.00		33,773.00
230 PSERS Retirement Contributions	36,823.00	33,955.00		70,778.00
260 Workers' Compensation	1,473.00	1,119.00		3,032.00
270 Group Insurance – Self-Insurance	19,285.00	14,992.00		51,875.00
Total Personnel Services – Employee Benefits	\$69,937.00	\$63,068.00		\$166,668.00
300 <u>Purchased Professional and Technical Services</u>				
322 Professional Educational Services – lus	58,194.00	58,194.00		116,388.00
329 Professional Educational Services – Other			34,500.00	34,500.00
330 Other Professional Services	2,000.00	1,500.00		3,500.00
390 Other Purchased Professional and Technical Services		5,350.00		5,350.00
Total Purchased Professional and Technical Services	\$60,194.00	\$65,044.00	\$34,500.00	\$159,738.00
400 <u>Purchased Property Services</u>				
430 Repairs and Maintenance Services				169.00
Total Purchased Property Services				\$169.00
500 <u>Other Purchased Services</u>				
550 Printing and Binding		1,116.00		1,552.00
580 Travel				179.00
Total Other Purchased Services		\$1,116.00		\$1,731.00
600 <u>Supplies</u>				
610 General Supplies	6,608.00	3,157.00		9,765.00
Total Supplies	\$6,608.00	\$3,157.00		\$9,765.00
700 <u>Property</u>				
750 Equipment – Original and Additional	638.00	758.00		1,396.00
Total Property	\$638.00	\$758.00		\$1,396.00
800 <u>Other Objects</u>				
810 Dues and Fees		144.00		242.00
Total Other Objects		\$144.00		\$242.00
Total 2100 Support Services – Students	\$283,606.00	\$266,302.00	\$34,500.00	\$665,754.00

LEA : 122097203 Morrisville Borough SD

Printed 5/8/2017 3:59:49 PM

General Fund (10)				
2110 Supervision of Student Services	<u>Elementary</u>	<u>Secondary</u>	<u>Federal</u>	<u>Total</u>
300 <u>Purchased Professional and Technical Services</u>				
322 Professional Educational Services – Ius	58,194.00	58,194.00		116,388.00
329 Professional Educational Services – Other			34,500.00	34,500.00
Total Purchased Professional and Technical Services	\$58,194.00	\$58,194.00	\$34,500.00	\$150,888.00
500 <u>Other Purchased Services</u>				
550 Printing and Binding		224.00		224.00
Total Other Purchased Services		\$224.00		\$224.00
600 <u>Supplies</u>				
610 General Supplies	5,978.00	1,839.00		7,817.00
Total Supplies	\$5,978.00	\$1,839.00		\$7,817.00
700 <u>Property</u>				
750 Equipment – Original and Additional	638.00	758.00		1,396.00
Total Property	\$638.00	\$758.00		\$1,396.00
800 <u>Other Objects</u>				
810 Dues and Fees		144.00		144.00
Total Other Objects		\$144.00		\$144.00
Total 2110 Supervision of Student Services	\$64,810.00	\$61,159.00	\$34,500.00	\$160,469.00

LEA : 122097203 Morrisville Borough SD

Printed 5/8/2017 3:59:49 PM

General Fund (10)				
2111 Supervision of Student Services – Head of Component	<u>Elementary</u>	<u>Secondary</u>	<u>Federal</u>	<u>Total</u>
300 <u>Purchased Professional and Technical Services</u>				
322 Professional Educational Services – Ius	58,194.00	58,194.00		116,388.00
329 Professional Educational Services – Other			34,500.00	34,500.00
Total Purchased Professional and Technical Services	\$58,194.00	\$58,194.00	\$34,500.00	\$150,888.00
500 <u>Other Purchased Services</u>				
550 Printing and Binding		224.00		224.00
Total Other Purchased Services		\$224.00		\$224.00
600 <u>Supplies</u>				
610 General Supplies	5,978.00	1,839.00		7,817.00
Total Supplies	\$5,978.00	\$1,839.00		\$7,817.00
700 <u>Property</u>				
750 Equipment – Original and Additional	638.00	758.00		1,396.00
Total Property	\$638.00	\$758.00		\$1,396.00
800 <u>Other Objects</u>				
810 Dues and Fees		144.00		144.00
Total Other Objects		\$144.00		\$144.00
Total 2111 Supervision of Student Services – Head of Component	\$64,810.00	\$61,159.00	\$34,500.00	\$160,469.00

LEA : 122097203 Morrisville Borough SD

Printed 5/8/2017 3:59:49 PM

General Fund (10)				
2120 Guidance Services	<u>Elementary</u>	<u>Secondary</u>	<u>Federal</u>	<u>Total</u>
100 <u>Personnel Services – Salaries</u>				
100 Personnel Services – Salaries	132,084.00	104,847.00		236,931.00
Total Personnel Services – Salaries	\$132,084.00	\$104,847.00		\$236,931.00
200 <u>Personnel Services – Employee Benefits</u>				
220 Social Security Contributions	10,061.00	8,433.00		18,494.00
230 PSERS Retirement Contributions	33,168.00	26,676.00		59,844.00
260 Workers’ Compensation	1,171.00	962.00		2,133.00
270 Group Insurance – Self-Insurance	19,285.00	14,992.00		34,277.00
Total Personnel Services – Employee Benefits	\$63,685.00	\$51,063.00		\$114,748.00
300 <u>Purchased Professional and Technical Services</u>				
390 Other Purchased Professional and Technical Services		5,350.00		5,350.00
Total Purchased Professional and Technical Services		\$5,350.00		\$5,350.00
500 <u>Other Purchased Services</u>				
550 Printing and Binding		892.00		892.00
Total Other Purchased Services		\$892.00		\$892.00
600 <u>Supplies</u>				
610 General Supplies	192.00	881.00		1,073.00
Total Supplies	\$192.00	\$881.00		\$1,073.00
Total 2120 Guidance Services	\$195,961.00	\$163,033.00		\$358,994.00

LEA : 122097203 Morrisville Borough SD

Printed 5/8/2017 3:59:49 PM

General Fund (10)

2140 Psychological Services	Elementary	Secondary	Federal	Total
100 <u>Personnel Services – Salaries</u>				
100 Personnel Services – Salaries	14,145.00	28,168.00		42,313.00
Total Personnel Services – Salaries	\$14,145.00	\$28,168.00		\$42,313.00
200 <u>Personnel Services – Employee Benefits</u>				
210 Group Insurance – Contracted Provider	1,230.00	2,448.00		3,678.00
220 Social Security Contributions	1,065.00	2,121.00		3,186.00
230 PSERS Retirement Contributions	3,655.00	7,279.00		10,934.00
260 Workers' Compensation	302.00	157.00		459.00
Total Personnel Services – Employee Benefits	\$6,252.00	\$12,005.00		\$18,257.00
300 <u>Purchased Professional and Technical Services</u>				
330 Other Professional Services	2,000.00	1,500.00		3,500.00
Total Purchased Professional and Technical Services	\$2,000.00	\$1,500.00		\$3,500.00
600 <u>Supplies</u>				
610 General Supplies	438.00	437.00		875.00
Total Supplies	\$438.00	\$437.00		\$875.00
Total 2140 Psychological Services	\$22,835.00	\$42,110.00		\$64,945.00

LEA : 122097203 Morrisville Borough SD

Printed 5/8/2017 3:59:49 PM

General Fund (10)				
2170 Student Accounting Services	<u>Elementary</u>	<u>Secondary</u>	<u>Federal</u>	<u>Total</u>
100 <u>Personnel Services – Salaries</u>				
100 Personnel Services – Salaries				46,801.00
Total Personnel Services – Salaries				\$46,801.00
200 <u>Personnel Services – Employee Benefits</u>				
210 Group Insurance – Contracted Provider				3,532.00
220 Social Security Contributions				12,093.00
260 Workers’ Compensation				440.00
270 Group Insurance – Self-Insurance				17,598.00
Total Personnel Services – Employee Benefits				\$33,663.00
400 <u>Purchased Property Services</u>				
430 Repairs and Maintenance Services				169.00
Total Purchased Property Services				\$169.00
500 <u>Other Purchased Services</u>				
550 Printing and Binding				436.00
580 Travel				179.00
Total Other Purchased Services				\$615.00
800 <u>Other Objects</u>				
810 Dues and Fees				98.00
Total Other Objects				\$98.00
Total 2170 Student Accounting Services				\$81,346.00

LEA : 122097203 Morrisville Borough SD

Printed 5/8/2017 3:59:49 PM

General Fund (10)				
2200 Support Services – Instructional Staff	<u>Elementary</u>	<u>Secondary</u>	<u>Federal</u>	<u>Total</u>
100 <u>Personnel Services – Salaries</u>				
100 Personnel Services – Salaries		100.00		100.00
Total Personnel Services – Salaries		\$100.00		\$100.00
200 <u>Personnel Services – Employee Benefits</u>				
220 Social Security Contributions		6.00	115.00	121.00
230 PSERS Retirement Contributions		26.00	388.00	414.00
Total Personnel Services – Employee Benefits		\$32.00	\$503.00	\$535.00
300 <u>Purchased Professional and Technical Services</u>				
323 Professional Educational Services – Other Educational Agencies	350.00	350.00		700.00
330 Other Professional Services		3,007.00		3,007.00
Total Purchased Professional and Technical Services	\$350.00	\$3,357.00		\$3,707.00
600 <u>Supplies</u>				
610 General Supplies		1,500.00		1,500.00
Total Supplies		\$1,500.00		\$1,500.00
Total 2200 Support Services – Instructional Staff	\$350.00	\$4,989.00	\$503.00	\$5,842.00

LEA : 122097203 Morrisville Borough SD

Printed 5/8/2017 3:59:49 PM

General Fund (10)				
2270 Instructional Staff Professional Development Services	<u>Elementary</u>	<u>Secondary</u>	<u>Federal</u>	<u>Total</u>
100 <u>Personnel Services – Salaries</u>				
100 Personnel Services – Salaries		100.00		100.00
Total Personnel Services – Salaries		\$100.00		\$100.00
200 <u>Personnel Services – Employee Benefits</u>				
220 Social Security Contributions		6.00	115.00	121.00
230 PSERS Retirement Contributions		26.00	388.00	414.00
Total Personnel Services – Employee Benefits		\$32.00	\$503.00	\$535.00
300 <u>Purchased Professional and Technical Services</u>				
323 Professional Educational Services – Other Educational Agencies	350.00	350.00		700.00
330 Other Professional Services		3,007.00		3,007.00
Total Purchased Professional and Technical Services	\$350.00	\$3,357.00		\$3,707.00
600 <u>Supplies</u>				
610 General Supplies		1,500.00		1,500.00
Total Supplies		\$1,500.00		\$1,500.00
Total 2270 Instructional Staff Professional Development Services	\$350.00	\$4,989.00	\$503.00	\$5,842.00

LEA : 122097203 Morrisville Borough SD

Printed 5/8/2017 3:59:49 PM

General Fund (10)

2300 Support Services – Administration	Elementary	Secondary	Federal	Total
100 Personnel Services – Salaries				
100 Personnel Services – Salaries	151,404.00	166,743.00		505,055.00
Total Personnel Services – Salaries	\$151,404.00	\$166,743.00		\$505,055.00
200 Personnel Services – Employee Benefits				
220 Social Security Contributions	11,226.00	12,003.00		36,507.00
230 PSERS Retirement Contributions	38,613.00	39,634.00		126,309.00
240 Tuition Reimbursement		500.00		500.00
260 Workers' Compensation	1,787.00	1,710.00		5,137.00
270 Group Insurance – Self-Insurance	33,309.00	42,274.00		93,485.00
Total Personnel Services – Employee Benefits	\$84,935.00	\$96,121.00		\$261,938.00
300 Purchased Professional and Technical Services				
324 Professional Educational Services – Employee Training and Development Services				11,839.00
330 Other Professional Services				41,550.00
340 Technical Services				71,788.00
Total Purchased Professional and Technical Services				\$125,177.00
500 Other Purchased Services				
520 Insurance – General				15,714.00
530 Communications		38.00		38.00
541 Advertising Related to Federal Grant Awards				1,945.00
550 Printing and Binding				62.00
580 Travel				564.00
Total Other Purchased Services		\$38.00		\$18,323.00
600 Supplies				
610 General Supplies	196.00	5,279.00		10,515.00
640 Books and Periodicals	254.00	15.00		525.00
Total Supplies	\$450.00	\$5,294.00		\$11,040.00
700 Property				
750 Equipment – Original and Additional	138.00	611.00		933.00
Total Property	\$138.00	\$611.00		\$933.00
800 Other Objects				
810 Dues and Fees		1,235.00		8,582.00
Total Other Objects		\$1,235.00		\$8,582.00
Total 2300 Support Services – Administration	\$236,927.00	\$270,042.00		\$931,048.00

LEA : 122097203 Morrisville Borough SD

Printed 5/8/2017 3:59:49 PM

General Fund (10)				
2310 Board Services				
	<u>Elementary</u>	<u>Secondary</u>	<u>Federal</u>	<u>Total</u>
100 <u>Personnel Services – Salaries</u>				
100 Personnel Services – Salaries				8,000.00
Total Personnel Services – Salaries				\$8,000.00
200 <u>Personnel Services – Employee Benefits</u>				
220 Social Security Contributions				598.00
230 PSERS Retirement Contributions				2,067.00
Total Personnel Services – Employee Benefits				\$2,665.00
300 <u>Purchased Professional and Technical Services</u>				
330 Other Professional Services				41,550.00
Total Purchased Professional and Technical Services				\$41,550.00
500 <u>Other Purchased Services</u>				
520 Insurance – General				15,714.00
541 Advertising Related to Federal Grant Awards				1,945.00
Total Other Purchased Services				\$17,659.00
600 <u>Supplies</u>				
610 General Supplies				3,317.00
Total Supplies				\$3,317.00
800 <u>Other Objects</u>				
810 Dues and Fees				4,500.00
Total Other Objects				\$4,500.00
Total 2310 Board Services				\$77,691.00

LEA : 122097203 Morrisville Borough SD

Printed 5/8/2017 3:59:49 PM

General Fund (10)

2330 Tax Assessment and Collection Services	<u>Elementary</u>	<u>Secondary</u>	<u>Federal</u>	<u>Total</u>
300 <u>Purchased Professional and Technical Services</u>				
324 Professional Educational Services – Employee Training and Development Services				11,839.00
Total Purchased Professional and Technical Services				\$11,839.00
Total 2330 Tax Assessment and Collection Services				\$11,839.00

LEA : 122097203 Morrisville Borough SD

Printed 5/8/2017 3:59:49 PM

General Fund (10)

2350 Legal and Accounting Services

Elementary

Secondary

Federal

Total

300 Purchased Professional and Technical Services

340 Technical Services

71,788.00

Total Purchased Professional and Technical Services				\$71,788.00
Total 2350 Legal and Accounting Services				\$71,788.00

LEA : 122097203 Morrisville Borough SD

Printed 5/8/2017 3:59:49 PM

General Fund (10)				
2360 Office of the Superintendent / Executive Director Services	<u>Elementary</u>	<u>Secondary</u>	<u>Federal</u>	<u>Total</u>
100 <u>Personnel Services – Salaries</u>				
100 Personnel Services – Salaries				178,908.00
Total Personnel Services – Salaries				\$178,908.00
200 <u>Personnel Services – Employee Benefits</u>				
220 Social Security Contributions				12,680.00
230 PSERS Retirement Contributions				45,995.00
260 Workers’ Compensation				1,640.00
270 Group Insurance – Self-Insurance				17,902.00
Total Personnel Services – Employee Benefits				\$78,217.00
500 <u>Other Purchased Services</u>				
530 Communications		38.00		38.00
550 Printing and Binding				62.00
580 Travel				564.00
Total Other Purchased Services		\$38.00		\$664.00
600 <u>Supplies</u>				
610 General Supplies				1,723.00
640 Books and Periodicals				256.00
Total Supplies				\$1,979.00
700 <u>Property</u>				
750 Equipment – Original and Additional				184.00
Total Property				\$184.00
800 <u>Other Objects</u>				
810 Dues and Fees				2,847.00
Total Other Objects				\$2,847.00
Total 2360 Office of the Superintendent / Executive Director Services		\$38.00		\$262,799.00

LEA : 122097203 Morrisville Borough SD

Printed 5/8/2017 3:59:49 PM

General Fund (10)				
2380 Office of the Principal Services	<u>Elementary</u>	<u>Secondary</u>	<u>Federal</u>	<u>Total</u>
100 <u>Personnel Services – Salaries</u>				
100 Personnel Services – Salaries	151,404.00	166,743.00		318,147.00
Total Personnel Services – Salaries	\$151,404.00	\$166,743.00		\$318,147.00
200 <u>Personnel Services – Employee Benefits</u>				
220 Social Security Contributions	11,226.00	12,003.00		23,229.00
230 PSERS Retirement Contributions	38,613.00	39,634.00		78,247.00
240 Tuition Reimbursement		500.00		500.00
260 Workers' Compensation	1,787.00	1,710.00		3,497.00
270 Group Insurance – Self-Insurance	33,309.00	42,274.00		75,583.00
Total Personnel Services – Employee Benefits	\$84,935.00	\$96,121.00		\$181,056.00
600 <u>Supplies</u>				
610 General Supplies	196.00	5,279.00		5,475.00
640 Books and Periodicals	254.00	15.00		269.00
Total Supplies	\$450.00	\$5,294.00		\$5,744.00
700 <u>Property</u>				
750 Equipment – Original and Additional	138.00	611.00		749.00
Total Property	\$138.00	\$611.00		\$749.00
800 <u>Other Objects</u>				
810 Dues and Fees		1,235.00		1,235.00
Total Other Objects		\$1,235.00		\$1,235.00
Total 2380 Office of the Principal Services	\$236,927.00	\$270,004.00		\$506,931.00

LEA : 122097203 Morrisville Borough SD

Printed 5/8/2017 3:59:49 PM

General Fund (10)				
2400 Support Services – Pupil Health	<u>Elementary</u>	<u>Secondary</u>	<u>Federal</u>	<u>Total</u>
100 <u>Personnel Services – Salaries</u>				
100 Personnel Services – Salaries				110,125.00
Total Personnel Services – Salaries				\$110,125.00
200 <u>Personnel Services – Employee Benefits</u>				
220 Social Security Contributions				8,315.00
230 PSERS Retirement Contributions				23,564.00
240 Tuition Reimbursement				1,604.00
260 Workers' Compensation				1,261.00
270 Group Insurance – Self-Insurance				5,148.00
Total Personnel Services – Employee Benefits				\$39,892.00
300 <u>Purchased Professional and Technical Services</u>				
340 Technical Services				5,430.00
Total Purchased Professional and Technical Services				\$5,430.00
400 <u>Purchased Property Services</u>				
440 Rentals				182.00
Total Purchased Property Services				\$182.00
600 <u>Supplies</u>				
610 General Supplies				3,974.00
Total Supplies				\$3,974.00
800 <u>Other Objects</u>				
810 Dues and Fees				492.00
Total Other Objects				\$492.00
Total 2400 Support Services – Pupil Health				\$160,095.00

LEA : 122097203 Morrisville Borough SD

Printed 5/8/2017 3:59:49 PM

General Fund (10)				
2420 Medical Services	<u>Elementary</u>	<u>Secondary</u>	<u>Federal</u>	<u>Total</u>
300 <u>Purchased Professional and Technical Services</u>				
340 Technical Services				3,430.00
Total Purchased Professional and Technical Services				\$3,430.00
Total 2420 Medical Services				\$3,430.00

LEA : 122097203 Morrisville Borough SD

Printed 5/8/2017 3:59:49 PM

General Fund (10)

2430 Dental Services

<u>Elementary</u>	<u>Secondary</u>	<u>Federal</u>	<u>Total</u>
-------------------	------------------	----------------	--------------

300 Purchased Professional and Technical Services

340 Technical Services			2,000.00
------------------------	--	--	----------

Total Purchased Professional and Technical Services			\$2,000.00
--	--	--	-------------------

Total 2430 Dental Services			\$2,000.00
-----------------------------------	--	--	-------------------

LEA : 122097203 Morrisville Borough SD

Printed 5/8/2017 3:59:49 PM

General Fund (10)				
2440 Nursing Services				
	<u>Elementary</u>	<u>Secondary</u>	<u>Federal</u>	<u>Total</u>
100 <u>Personnel Services – Salaries</u>				
100 Personnel Services – Salaries				110,125.00
Total Personnel Services – Salaries				\$110,125.00
200 <u>Personnel Services – Employee Benefits</u>				
220 Social Security Contributions				8,315.00
230 PSERS Retirement Contributions				23,564.00
240 Tuition Reimbursement				1,604.00
260 Workers' Compensation				1,261.00
270 Group Insurance – Self-Insurance				5,148.00
Total Personnel Services – Employee Benefits				\$39,892.00
400 <u>Purchased Property Services</u>				
440 Rentals				182.00
Total Purchased Property Services				\$182.00
600 <u>Supplies</u>				
610 General Supplies				3,974.00
Total Supplies				\$3,974.00
800 <u>Other Objects</u>				
810 Dues and Fees				492.00
Total Other Objects				\$492.00
Total 2440 Nursing Services				\$154,665.00

LEA : 122097203 Morrisville Borough SD

Printed 5/8/2017 3:59:49 PM

General Fund (10)				
2500 Support Services – Business	<u>Elementary</u>	<u>Secondary</u>	<u>Federal</u>	<u>Total</u>
100 <u>Personnel Services – Salaries</u>				
100 Personnel Services – Salaries				5,655.00
Total Personnel Services – Salaries				\$5,655.00
200 <u>Personnel Services – Employee Benefits</u>				
220 Social Security Contributions				433.00
230 PSERS Retirement Contributions				1,485.00
260 Workers’ Compensation				2,275.00
Total Personnel Services – Employee Benefits				\$4,193.00
300 <u>Purchased Professional and Technical Services</u>				
310 Official / Administrative Services				351,281.00
340 Technical Services				10,735.00
Total Purchased Professional and Technical Services				\$362,016.00
400 <u>Purchased Property Services</u>				
440 Rentals				2,836.00
Total Purchased Property Services				\$2,836.00
500 <u>Other Purchased Services</u>				
530 Communications				128.00
Total Other Purchased Services				\$128.00
600 <u>Supplies</u>				
610 General Supplies				10,515.00
Total Supplies				\$10,515.00
700 <u>Property</u>				
760 Equipment – Replacement				480.00
Total Property				\$480.00
800 <u>Other Objects</u>				
810 Dues and Fees				6,813.00
Total Other Objects				\$6,813.00
Total 2500 Support Services – Business				\$392,636.00

LEA : 122097203 Morrisville Borough SD

Printed 5/8/2017 3:59:49 PM

General Fund (10)				
2510 Fiscal Services	<u>Elementary</u>	<u>Secondary</u>	<u>Federal</u>	<u>Total</u>
100 <u>Personnel Services – Salaries</u>				
100 Personnel Services – Salaries				5,655.00
Total Personnel Services – Salaries				\$5,655.00
200 <u>Personnel Services – Employee Benefits</u>				
220 Social Security Contributions				433.00
230 PSERS Retirement Contributions				1,485.00
260 Workers’ Compensation				2,275.00
Total Personnel Services – Employee Benefits				\$4,193.00
300 <u>Purchased Professional and Technical Services</u>				
310 Official / Administrative Services				351,281.00
340 Technical Services				10,735.00
Total Purchased Professional and Technical Services				\$362,016.00
400 <u>Purchased Property Services</u>				
440 Rentals				2,836.00
Total Purchased Property Services				\$2,836.00
500 <u>Other Purchased Services</u>				
530 Communications				128.00
Total Other Purchased Services				\$128.00
600 <u>Supplies</u>				
610 General Supplies				10,515.00
Total Supplies				\$10,515.00
700 <u>Property</u>				
760 Equipment – Replacement				480.00
Total Property				\$480.00
800 <u>Other Objects</u>				
810 Dues and Fees				6,813.00
Total Other Objects				\$6,813.00
Total 2510 Fiscal Services				\$392,636.00

LEA : 122097203 Morrisville Borough SD

Printed 5/8/2017 3:59:49 PM

General Fund (10)				
2511 Supervision of Fiscal Services - Head of Component	<u>Elementary</u>	<u>Secondary</u>	<u>Federal</u>	<u>Total</u>
100 <u>Personnel Services – Salaries</u>				
100 Personnel Services – Salaries				5,655.00
Total Personnel Services – Salaries				\$5,655.00
200 <u>Personnel Services – Employee Benefits</u>				
220 Social Security Contributions				433.00
230 PSERS Retirement Contributions				1,485.00
260 Workers’ Compensation				2,275.00
Total Personnel Services – Employee Benefits				\$4,193.00
300 <u>Purchased Professional and Technical Services</u>				
310 Official / Administrative Services				351,281.00
340 Technical Services				10,735.00
Total Purchased Professional and Technical Services				\$362,016.00
400 <u>Purchased Property Services</u>				
440 Rentals				2,836.00
Total Purchased Property Services				\$2,836.00
500 <u>Other Purchased Services</u>				
530 Communications				128.00
Total Other Purchased Services				\$128.00
600 <u>Supplies</u>				
610 General Supplies				10,515.00
Total Supplies				\$10,515.00
700 <u>Property</u>				
760 Equipment – Replacement				480.00
Total Property				\$480.00
800 <u>Other Objects</u>				
810 Dues and Fees				6,813.00
Total Other Objects				\$6,813.00
Total 2511 Supervision of Fiscal Services - Head of Component				\$392,636.00

LEA : 122097203 Morrisville Borough SD

Printed 5/8/2017 3:59:49 PM

General Fund (10)				
2600 Operation and Maintenance of Plant Services	<u>Elementary</u>	<u>Secondary</u>	<u>Federal</u>	<u>Total</u>
100 <u>Personnel Services – Salaries</u>				
100 Personnel Services – Salaries				454,729.00
Total Personnel Services – Salaries				\$454,729.00
200 <u>Personnel Services – Employee Benefits</u>				
220 Social Security Contributions				33,194.00
230 PSERS Retirement Contributions				103,104.00
260 Workers’ Compensation				3,915.00
270 Group Insurance – Self-Insurance				94,890.00
Total Personnel Services – Employee Benefits				\$235,103.00
300 <u>Purchased Professional and Technical Services</u>				
329 Professional Educational Services – Other				570.00
390 Other Purchased Professional and Technical Services				39,735.00
Total Purchased Professional and Technical Services				\$40,305.00
400 <u>Purchased Property Services</u>				
410 Cleaning Services				140,815.00
420 Utility Services				165,537.00
430 Repairs and Maintenance Services				151,083.00
440 Rentals				12,500.00
460 Extermination Services				1,145.00
Total Purchased Property Services				\$471,080.00
500 <u>Other Purchased Services</u>				
523 General Property and Liability Insurance				73,798.00
530 Communications				31,379.00
Total Other Purchased Services				\$105,177.00
600 <u>Supplies</u>				
610 General Supplies		53,651.00		53,651.00
620 Energy				17,369.00
Total Supplies		\$53,651.00		\$71,020.00
700 <u>Property</u>				
750 Equipment – Original and Additional				26,268.00
760 Equipment – Replacement				4,241.00
Total Property				\$30,509.00
800 <u>Other Objects</u>				
810 Dues and Fees				377.00
Total Other Objects				\$377.00
Total 2600 Operation and Maintenance of Plant Services		\$53,651.00		\$1,408,300.00

LEA : 122097203 Morrisville Borough SD

Printed 5/8/2017 3:59:49 PM

General Fund (10)				
2610 Supervision of Operation and Maintenance of Plant Services	<u>Elementary</u>	<u>Secondary</u>	<u>Federal</u>	<u>Total</u>
100 <u>Personnel Services – Salaries</u>				
100 Personnel Services – Salaries				53,158.00
Total Personnel Services – Salaries				\$53,158.00
200 <u>Personnel Services – Employee Benefits</u>				
220 Social Security Contributions				4,067.00
230 PSERS Retirement Contributions				13,736.00
Total Personnel Services – Employee Benefits				\$17,803.00
Total 2610 Supervision of Operation and Maintenance of Plant Services				\$70,961.00

LEA : 122097203 Morrisville Borough SD

Printed 5/8/2017 3:59:49 PM

General Fund (10)				
2611 Supervision of Operation and Maintenance of Plant Services – Head of Component	<u>Elementary</u>	<u>Secondary</u>	<u>Federal</u>	<u>Total</u>
100 <u>Personnel Services – Salaries</u>				
100 Personnel Services – Salaries				53,158.00
Total Personnel Services – Salaries				\$53,158.00
200 <u>Personnel Services – Employee Benefits</u>				
220 Social Security Contributions				4,067.00
230 PSERS Retirement Contributions				13,736.00
Total Personnel Services – Employee Benefits				\$17,803.00
Total 2611 Supervision of Operation and Maintenance of Plant Services – Head of Component				\$70,961.00

LEA : 122097203 Morrisville Borough SD

Printed 5/8/2017 3:59:49 PM

General Fund (10)				
2620 Operation of Buildings Services	<u>Elementary</u>	<u>Secondary</u>	<u>Federal</u>	<u>Total</u>
100 <u>Personnel Services – Salaries</u>				
100 Personnel Services – Salaries				401,571.00
Total Personnel Services – Salaries				\$401,571.00
200 <u>Personnel Services – Employee Benefits</u>				
220 Social Security Contributions				29,127.00
230 PSERS Retirement Contributions				89,368.00
260 Workers’ Compensation				3,915.00
270 Group Insurance – Self-Insurance				94,890.00
Total Personnel Services – Employee Benefits				\$217,300.00
300 <u>Purchased Professional and Technical Services</u>				
329 Professional Educational Services – Other				570.00
Total Purchased Professional and Technical Services				\$570.00
400 <u>Purchased Property Services</u>				
410 Cleaning Services				3,640.00
420 Utility Services				165,537.00
430 Repairs and Maintenance Services				151,083.00
440 Rentals				12,500.00
460 Extermination Services				1,145.00
Total Purchased Property Services				\$333,905.00
500 <u>Other Purchased Services</u>				
523 General Property and Liability Insurance				73,798.00
530 Communications				31,379.00
Total Other Purchased Services				\$105,177.00
600 <u>Supplies</u>				
610 General Supplies		53,651.00		53,651.00
620 Energy				17,369.00
Total Supplies		\$53,651.00		\$71,020.00
700 <u>Property</u>				
750 Equipment – Original and Additional				26,268.00
760 Equipment – Replacement				4,241.00
Total Property				\$30,509.00
800 <u>Other Objects</u>				
810 Dues and Fees				377.00
Total Other Objects				\$377.00
Total 2620 Operation of Buildings Services		\$53,651.00		\$1,160,429.00

LEA : 122097203 Morrisville Borough SD

Printed 5/8/2017 3:59:49 PM

General Fund (10)

2630 Care and Upkeep of Grounds Services	<u>Elementary</u>	<u>Secondary</u>	<u>Federal</u>	<u>Total</u>
400 <u>Purchased Property Services</u>				
410 Cleaning Services				137,175.00
Total Purchased Property Services				\$137,175.00
Total 2630 Care and Upkeep of Grounds Services				\$137,175.00

LEA : 122097203 Morrisville Borough SD

Printed 5/8/2017 3:59:49 PM

General Fund (10)

2660 Safety and Security Services	<u>Elementary</u>	<u>Secondary</u>	<u>Federal</u>	<u>Total</u>
300 <u>Purchased Professional and Technical Services</u>				
390 Other Purchased Professional and Technical Services				39,735.00
Total Purchased Professional and Technical Services				\$39,735.00
Total 2660 Safety and Security Services				\$39,735.00

LEA : 122097203 Morrisville Borough SD

Printed 5/8/2017 3:59:49 PM

General Fund (10)				
2700 Student Transportation Services	<u>Elementary</u>	<u>Secondary</u>	<u>Federal</u>	<u>Total</u>
100 <u>Personnel Services – Salaries</u>				
100 Personnel Services – Salaries				52,142.00
Total Personnel Services – Salaries				\$52,142.00
200 <u>Personnel Services – Employee Benefits</u>				
220 Social Security Contributions				4,373.00
230 PSERS Retirement Contributions				13,476.00
260 Workers’ Compensation				350.00
270 Group Insurance – Self-Insurance				6,451.00
Total Personnel Services – Employee Benefits				\$24,650.00
300 <u>Purchased Professional and Technical Services</u>				
323 Professional Educational Services – Other Educational Agencies				(223.00)
Total Purchased Professional and Technical Services				(\$223.00)
500 <u>Other Purchased Services</u>				
513 Contracted Carriers				87,664.00
516 Student Transportation Services From the IU				294,686.00
522 Automotive Liability Insurance				10,345.00
Total Other Purchased Services				\$392,695.00
600 <u>Supplies</u>				
610 General Supplies				(555.00)
620 Energy				11,018.00
Total Supplies				\$10,463.00
Total 2700 Student Transportation Services				\$479,727.00

LEA : 122097203 Morrisville Borough SD

Printed 5/8/2017 3:59:49 PM

General Fund (10)					
2720 Vehicle Operation Services		Elementary	Secondary	Federal	Total
100 <u>Personnel Services – Salaries</u>					
100 Personnel Services – Salaries					52,142.00
Total Personnel Services – Salaries					\$52,142.00
200 <u>Personnel Services – Employee Benefits</u>					
220 Social Security Contributions					4,373.00
230 PSERS Retirement Contributions					13,476.00
260 Workers' Compensation					350.00
270 Group Insurance – Self-Insurance					6,451.00
Total Personnel Services – Employee Benefits					\$24,650.00
300 <u>Purchased Professional and Technical Services</u>					
323 Professional Educational Services – Other Educational Agencies					(223.00)
Total Purchased Professional and Technical Services					(\$223.00)
500 <u>Other Purchased Services</u>					
513 Contracted Carriers					87,664.00
516 Student Transportation Services From the IU					294,686.00
522 Automotive Liability Insurance					10,345.00
Total Other Purchased Services					\$392,695.00
600 <u>Supplies</u>					
610 General Supplies					(555.00)
620 Energy					11,018.00
Total Supplies					\$10,463.00
Total 2720 Vehicle Operation Services					\$479,727.00

LEA : 122097203 Morrisville Borough SD

Printed 5/8/2017 3:59:49 PM

General Fund (10)				
2800 Support Services – Central	<u>Elementary</u>	<u>Secondary</u>	<u>Federal</u>	<u>Total</u>
100 <u>Personnel Services – Salaries</u>				
100 Personnel Services – Salaries				103,885.00
Total Personnel Services – Salaries				\$103,885.00
200 <u>Personnel Services – Employee Benefits</u>				
220 Social Security Contributions				7,781.00
230 PSERS Retirement Contributions				26,973.00
260 Workers' Compensation				1,005.00
270 Group Insurance – Self-Insurance				33,731.00
Total Personnel Services – Employee Benefits				\$69,490.00
300 <u>Purchased Professional and Technical Services</u>				
340 Technical Services				1,336.00
Total Purchased Professional and Technical Services				\$1,336.00
500 <u>Other Purchased Services</u>				
580 Travel				1,148.00
Total Other Purchased Services				\$1,148.00
600 <u>Supplies</u>				
610 General Supplies				4,502.00
640 Books and Periodicals				106,196.00
Total Supplies				\$110,698.00
700 <u>Property</u>				
750 Equipment – Original and Additional				113,501.00
Total Property				\$113,501.00
800 <u>Other Objects</u>				
810 Dues and Fees				518.00
Total Other Objects				\$518.00
Total 2800 Support Services – Central				\$400,576.00

LEA : 122097203 Morrisville Borough SD

Printed 5/8/2017 3:59:49 PM

General Fund (10)				
2810 Planning, Research, Development and Evaluation Services	<u>Elementary</u>	<u>Secondary</u>	<u>Federal</u>	<u>Total</u>
100 <u>Personnel Services – Salaries</u>				
100 Personnel Services – Salaries				103,885.00
Total Personnel Services – Salaries				\$103,885.00
200 <u>Personnel Services – Employee Benefits</u>				
220 Social Security Contributions				7,781.00
230 PSERS Retirement Contributions				26,973.00
260 Workers’ Compensation				1,005.00
270 Group Insurance – Self-Insurance				33,731.00
Total Personnel Services – Employee Benefits				\$69,490.00
300 <u>Purchased Professional and Technical Services</u>				
340 Technical Services				1,336.00
Total Purchased Professional and Technical Services				\$1,336.00
500 <u>Other Purchased Services</u>				
580 Travel				1,148.00
Total Other Purchased Services				\$1,148.00
600 <u>Supplies</u>				
610 General Supplies				4,502.00
640 Books and Periodicals				106,196.00
Total Supplies				\$110,698.00
700 <u>Property</u>				
750 Equipment – Original and Additional				113,501.00
Total Property				\$113,501.00
800 <u>Other Objects</u>				
810 Dues and Fees				518.00
Total Other Objects				\$518.00
Total 2810 Planning, Research, Development and Evaluation Services				\$400,576.00

LEA : 122097203 Morrisville Borough SD

Printed 5/8/2017 3:59:49 PM

General Fund (10)

2900 Other Support Services	<u>Elementary</u>	<u>Secondary</u>	<u>Federal</u>	<u>Total</u>
500 <u>Other Purchased Services</u>				
595 IU Payments By Withholding				5,138.00
599 Other Miscellaneous Purchased Services				42,913.00
Total Other Purchased Services				\$48,051.00
Total 2900 Other Support Services				\$48,051.00

LEA : 122097203 Morrisville Borough SD

Printed 5/8/2017 3:59:49 PM

General Fund (10)

2910 Support Services Not Listed Elsewhere In the 2000 Series

Elementary Secondary Federal Total

500 <u>Other Purchased Services</u>				
595 IU Payments By Withholding				5,138.00
599 Other Miscellaneous Purchased Services				42,913.00
Total Other Purchased Services				\$48,051.00
Total 2910 Support Services Not Listed Elsewhere In the 2000 Series				\$48,051.00

LEA : 122097203 Morrisville Borough SD

Printed 5/8/2017 3:59:51 PM

General Fund (10)	
3000 Operation of Non-Instructional Services	<u>Total</u>
100 <u>Personnel Services – Salaries</u>	
100 Personnel Services – Salaries	129,679.00
Total Personnel Services – Salaries	\$129,679.00
200 <u>Personnel Services – Employee Benefits</u>	
210 Group Insurance – Contracted Provider	2,879.00
220 Social Security Contributions	9,643.00
230 PSERS Retirement Contributions	29,734.00
270 Group Insurance – Self-Insurance	1,966.00
Total Personnel Services – Employee Benefits	\$44,222.00
300 <u>Purchased Professional and Technical Services</u>	
310 Official / Administrative Services	68,790.00
322 Professional Educational Services – Ius	28,156.00
390 Other Purchased Professional and Technical Services	23,258.00
Total Purchased Professional and Technical Services	\$120,204.00
400 <u>Purchased Property Services</u>	
430 Repairs and Maintenance Services	23,968.00
Total Purchased Property Services	\$23,968.00
500 <u>Other Purchased Services</u>	
510 Student Transportation Services	73,079.00
520 Insurance – General	6,675.00
580 Travel	1,220.00
Total Other Purchased Services	\$80,974.00
600 <u>Supplies</u>	
610 General Supplies	51,792.00
Total Supplies	\$51,792.00
800 <u>Other Objects</u>	
810 Dues and Fees	9,926.00
Total Other Objects	\$9,926.00
Total 3000 Operation of Non-Instructional Services	\$460,765.00

LEA : 122097203 Morrisville Borough SD

Printed 5/8/2017 3:59:51 PM

General Fund (10)				
3200 Student Activities	<u>Elementary</u>	<u>Secondary</u>	<u>Federal</u>	<u>Total</u>
100 <u>Personnel Services – Salaries</u>				
100 Personnel Services – Salaries				129,679.00
Total Personnel Services – Salaries				\$129,679.00
200 <u>Personnel Services – Employee Benefits</u>				
210 Group Insurance – Contracted Provider				2,879.00
220 Social Security Contributions				9,643.00
230 PSERS Retirement Contributions				29,734.00
270 Group Insurance – Self-Insurance				1,966.00
Total Personnel Services – Employee Benefits				\$44,222.00
300 <u>Purchased Professional and Technical Services</u>				
310 Official / Administrative Services				68,790.00
322 Professional Educational Services – lus				28,156.00
390 Other Purchased Professional and Technical Services				(585.00)
Total Purchased Professional and Technical Services				\$96,361.00
400 <u>Purchased Property Services</u>				
430 Repairs and Maintenance Services				23,968.00
Total Purchased Property Services				\$23,968.00
500 <u>Other Purchased Services</u>				
510 Student Transportation Services				73,079.00
520 Insurance – General				6,675.00
580 Travel				1,220.00
Total Other Purchased Services				\$80,974.00
600 <u>Supplies</u>				
610 General Supplies				51,792.00
Total Supplies				\$51,792.00
800 <u>Other Objects</u>				
810 Dues and Fees				9,926.00
Total Other Objects				\$9,926.00
Total 3200 Student Activities				\$436,922.00

LEA : 122097203 Morrisville Borough SD

Printed 5/8/2017 3:59:51 PM

General Fund (10)

3300 Community Services

<u>Elementary</u>	<u>Secondary</u>	<u>Federal</u>	<u>Total</u>
-------------------	------------------	----------------	--------------

300 Purchased Professional and Technical Services

390 Other Purchased Professional and Technical Services			23,843.00
---	--	--	-----------

Total Purchased Professional and Technical Services			\$23,843.00
--	--	--	--------------------

Total 3300 Community Services			\$23,843.00
--------------------------------------	--	--	--------------------

General Fund (10)

5000 Other Expenditures and Financing Uses		<u>Total</u>
800 <u>Other Objects</u>		
830 Interest		158,708.00
880 Refunds of Prior Years' Receipts		8,907.00
Total Other Objects		\$167,615.00
900 <u>Other Uses of Funds</u>		
910 Redemption of Principal		605,000.00
920 Authority Obligations		50,328.00
930 Fund Transfers		666.00
Total Other Uses of Funds		\$655,994.00
Total 5000 Other Expenditures and Financing Uses		\$823,609.00

LEA : 122097203 Morrisville Borough SD

Printed 5/8/2017 3:59:52 PM

General Fund (10)

5100 Debt Service / Other Expenditures and Financing Uses	<u>Elementary</u>	<u>Secondary</u>	<u>Federal</u>	<u>Total</u>
800 <u>Other Objects</u>				
830 Interest				158,708.00
880 Refunds of Prior Years' Receipts				8,907.00
Total Other Objects				\$167,615.00
900 <u>Other Uses of Funds</u>				
910 Redemption of Principal				605,000.00
920 Authority Obligations				50,328.00
Total Other Uses of Funds				\$655,328.00
Total 5100 Debt Service / Other Expenditures and Financing Uses				\$822,943.00

LEA : 122097203 Morrisville Borough SD

Printed 5/8/2017 3:59:52 PM

General Fund (10)

5110 Debt Service

Elementary Secondary Federal Total

800 Other Objects

830 Interest 158,708.00

Total Other Objects \$158,708.00

900 Other Uses of Funds

910 Redemption of Principal 605,000.00

920 Authority Obligations 50,328.00

Total Other Uses of Funds \$655,328.00

Total 5110 Debt Service \$814,036.00

LEA : 122097203 Morrisville Borough SD

Printed 5/8/2017 3:59:52 PM

General Fund (10)

5130 Refund of Prior Year Revenues / Receipts	<u>Elementary</u>	<u>Secondary</u>	<u>Federal</u>	<u>Total</u>
800 <u>Other Objects</u>				
880 Refunds of Prior Years' Receipts				8,907.00
Total Other Objects				\$8,907.00
Total 5130 Refund of Prior Year Revenues / Receipts				\$8,907.00

LEA : 122097203 Morrisville Borough SD

Printed 5/8/2017 3:59:52 PM

General Fund (10)

5200 Interfund Transfers – Out	<u>Elementary</u>	<u>Secondary</u>	<u>Federal</u>	<u>Total</u>
900 <u>Other Uses of Funds</u>				
930 Fund Transfers				666.00
Total Other Uses of Funds				\$666.00
Total 5200 Interfund Transfers – Out				\$666.00

LEA : 122097203 Morrisville Borough SD

Printed 5/8/2017 3:59:52 PM

General Fund (10)

5250 Enterprise Fund Transfers	<u>Elementary</u>	<u>Secondary</u>	<u>Federal</u>	<u>Total</u>
900 <u>Other Uses of Funds</u>				
930 Fund Transfers				666.00
Total Other Uses of Funds				\$666.00
Total 5250 Enterprise Fund Transfers				\$666.00

	General Fund(10)	Public Purpose Trust(27)	Other Compt Approved(28)	Athletic / Activity(29)	Capital Reserve (690.1850)(31)
1000 Instruction					
1100 Regular Programs - Elementary / Secondary	6,617,764.00				
1200 Special Programs - Elementary / Secondary	5,303,863.00				
1300 Vocational Education	535,081.00				
1400 Other Instructional Programs - Elementary / Secondary	3,879.00				
1800 Pre-Kindergarten	383,697.00				
Total Instruction	\$12,844,284.00				
2000 Support Services					
2100 Support Services - Students	665,754.00				
2200 Support Services - Instructional Staff	5,842.00				
2300 Support Services - Administration	931,048.00				
2400 Support Services - Pupil Health	160,095.00				
2500 Support Services - Business	392,636.00				
2600 Operation and Maintenance of Plant Services	1,408,300.00				
2700 Student Transportation Services	479,727.00				
2800 Support Services - Central	400,576.00				
2900 Other Support Services	48,051.00				
Total Support Services	\$4,492,029.00				
3000 Operation of Non-Instructional Services					
3200 Student Activities	436,922.00				
3300 Community Services	23,843.00				
Total Operation of Non-Instructional Services	\$460,765.00				
5000 Other Expenditures and Financing Uses					
5100 Debt Service / Other Expenditures and Financing Uses	822,943.00				
5200 Interfund Transfers - Out	666.00				
Total Other Expenditures and Financing Uses	\$823,609.00				
TOTAL ACTUAL EXPENDITURES & OTHER FINANCING USES	\$18,620,687.00				

LEA : 122097203 Morrisville Borough SD

Printed 5/8/2017 3:59:53 PM

	<u>Capital Reserve (1431)(32)</u>	<u>Other Capital Projects Fund(39)</u>	<u>Debt Service(40)</u>	<u>Permanent(90)</u>	<u>Total</u>
1000 Instruction					
1100 Regular Programs - Elementary / Secondary					6,617,764.00
1200 Special Programs - Elementary / Secondary					5,303,863.00
1300 Vocational Education					535,081.00
1400 Other Instructional Programs - Elementary / Secondary					3,879.00
1800 Pre-Kindergarten					383,697.00
Total Instruction					\$12,844,284.00
2000 Support Services					
2100 Support Services - Students					665,754.00
2200 Support Services - Instructional Staff					5,842.00
2300 Support Services - Administration					931,048.00
2400 Support Services - Pupil Health					160,095.00
2500 Support Services - Business					392,636.00
2600 Operation and Maintenance of Plant Services					1,408,300.00
2700 Student Transportation Services					479,727.00
2800 Support Services - Central					400,576.00
2900 Other Support Services					48,051.00
Total Support Services					\$4,492,029.00
3000 Operation of Non-Instructional Services					
3200 Student Activities					436,922.00
3300 Community Services					23,843.00
Total Operation of Non-Instructional Services					\$460,765.00
5000 Other Expenditures and Financing Uses					
5100 Debt Service / Other Expenditures and Financing Uses					822,943.00
5200 Interfund Transfers - Out					666.00
Total Other Expenditures and Financing Uses					\$823,609.00
TOTAL ACTUAL EXPENDITURES & OTHER FINANCING USES					\$18,620,687.00

LEA : 122097203 Morrisville Borough SD

Printed 5/8/2017 4:00:00 PM

PSERS Salary Data (Salary Data should relate to the General Fund only)

Amount	Description	Amount
	Total Salary Base for salaries subject to PSERS withholding	6,838,177.00
	Total Federally Funded salaries subject to PSERS withholding	477,869.00

Title I Expenditure Data

Amount	Description	Amount
	Expenditures Funded with Current Title I Funds	155,454.00
	Expenditures Funded with Carry over Title I Funds	
Total	Title I Expenditure Data	\$155,454.00

Title I ARRA Amount

Amount	Description	Amount
	Portion of Total Title I Expenditures funded with ARRA Title I	

Benefits for Staff Relative to Collective Bargaining Agreements

	OBJECT	COVERED	NOT COVERED	TOTAL
10 General Fund	No Self Insurance data to report			
	211 Medical Insurance	1,199,344.00	24,476.00	1,223,820.00
	212 Dental Insurance			
	215 Eye Care Insurance			
	216 Prescription Insurance			
	271 Self-Insurance Medical Benefits			
	272 Self-Insurance Dental Benefits			
	275 Self-Insurance Eye Care Benefits			
	276 Self-Insurance Prescription Benefits			
	FUND TOTAL	\$1,199,344.00	\$24,476.00	\$1,223,820.00
50 Enterprise Fund	No Self Insurance data to report			
	211 Medical Insurance			
	212 Dental Insurance			
	215 Eye Care Insurance			
	216 Prescription Insurance			
	271 Self-Insurance Medical Benefits			
	272 Self-Insurance Dental Benefits			
	275 Self-Insurance Eye Care Benefits			
	276 Self-Insurance Prescription Benefits			
	FUND TOTAL			
60 Internal Service Fund	No Self Insurance data to report			
	211 Medical Insurance			
	212 Dental Insurance			
	215 Eye Care Insurance			
	216 Prescription Insurance			
	271 Self-Insurance Medical Benefits			
	272 Self-Insurance Dental Benefits			
	275 Self-Insurance Eye Care Benefits			
	276 Self-Insurance Prescription Benefits			
	FUND TOTAL			
Total of All Funds		\$1,199,344.00	\$24,476.00	\$1,223,820.00

LEA : 122097203 Morrisville Borough SD

Printed 5/8/2017 4:00:02 PM

Function	Special Education (Prior Year)	Nonspecial Education (Prior Year)	Total (Prior Year)	Special Education (Current Year)	Nonspecial Education (Current Year)	Total (Current Year)
2120 Guidance Services	99,640.29	149,460.44	249,100.73	61,221.00	297,773.00	358,994.00
2140 Psychological Services	29,593.00	28,992.83	58,585.83	11,075.00	53,870.00	64,945.00
2150 Speech Pathology and Audiology Services						
2160 Social Work Services						
2260 Instruction and Curriculum Development Services						
2350 Legal and Accounting Services	45,631.21	68,446.81	114,078.02	12,242.00	59,546.00	71,788.00
2420 Medical Services	315.15	3,509.85	3,825.00	585.00	2,845.00	3,430.00
2440 Nursing Services	29,137.25	116,550.21	145,687.46	26,376.00	128,289.00	154,665.00
2700 Student Transportation Services	261,203.38	147,229.34	408,432.72	81,810.00	397,917.00	479,727.00
Total	\$465,520.28	\$514,189.48	\$979,709.76	\$193,309.00	\$940,240.00	\$1,133,549.00

LEA : 122097203 Morrisville Borough SD

Printed 5/8/2017 4:00:02 PM

(PRINCIPAL AMOUNTS ONLY)

ALL GOVERNMENTAL FUND TYPES

	Short-Term Borrowing	General Obligation Bonds/Notes	Authority Building Obligations	Other Long-Term Debt	Other Post- Employment Benefits (OPEB)	Compensated Absences	Net Pension Liability	Total
1. Debt at Beginning of Fiscal Year		6,357,000.00	214,704.00	245,431.00	536,573.00	393,802.00	21,255,000.00	29,002,510.00
2. Additional Debt Incurred During Year							273,000.00	273,000.00
3. Retirements and Repayments		605,000.00	50,328.00	57,498.00	124,740.00	62,677.00		900,243.00
4. Debt at End of Fiscal Year		5,752,000.00	164,376.00	187,933.00	411,833.00	331,125.00	21,528,000.00	28,375,267.00
5. Accreted Interest at End Of Fiscal Year								
6. Total Debt and Accreted Interest		5,752,000.00	164,376.00	187,933.00	411,833.00	331,125.00	21,528,000.00	28,375,267.00
7. Current Portion P&I - Due within 1 year		755,990.00	58,717.00	90,933.00				905,640.00
8. Interest Paid during current fiscal year		148,305.00	8,431.00					156,736.00

(PRINCIPAL AMOUNTS ONLY)

ALL PROPRIETARY FUND TYPES

1. Debt at Beginning of Fiscal Year
2. Additional Debt Incurred During Year
3. Retirements and Repayments
4. Debt at End of Fiscal Year
5. Accreted Interest at End Of Fiscal Year
6. Total Debt and Accreted Interest
7. Current Portion P&I - Due within 1 year
8. Interest Paid during current fiscal year

LEA : 122097203 Morrisville Borough SD

Printed 5/8/2017 4:00:02 PM

Total Principal and Interest Payments Made by Your School - All Funds

Function	Fund		Principal (910)	Principal (920)	Interest (830)	Total (Principal +Interest)	Misc Other Uses (990)
5110	10	General Fund	605,000.00	50,328.00	158,708.00	814,036.00	
5110	20	Special Revenue Funds					
5110	30	Capital Projects Funds					
5110	40	Debt Service Fund					
5110	90	Permanent Fund					
5120	10	General Fund					
5120	20	Special Revenue Funds					
5120	30	Capital Projects Funds					
5120	40	Debt Service Fund					
Total Debt Payments - Governmental Funds			\$605,000.00	\$50,328.00	\$158,708.00	\$814,036.00	

Function	Fund		Principal (910)	Principal (920)	Interest (830)	Total (Principal +Interest)
5110	50	Enterprise Fund				
5110	60	Internal Service Fund				
5120	50	Enterprise Fund				
5120	60	Internal Service Fund				
Total Debt Payments - Proprietary Funds						

LEA : 122097203 Morrisville Borough SD

Printed 5/8/2017 4:00:02 PM

Bond Details
Governmental Funds

Debt Category	Debt Issue Date (MM/YYYY)	Principal Amounts Only				Current Portion Due Within One Year (Principal and Interest)	Interest Paid During Fiscal Year
		Debt at Beginning of Fiscal Year	Additions	Reductions / Repayments	Debt at End of Fiscal Year		
General Obligation Bonds/Notes – CIB	10/2001	935,000.00		116,000.00	819,000.00	151,171.00	34,632.00
General Obligation Bonds/Notes – CIB	09/2011	262,000.00		64,000.00	198,000.00	68,138.00	3,392.00
General Obligation Bonds/Notes – CIB	11/2014	5,160,000.00		425,000.00	4,735,000.00	536,681.00	110,281.00
Authority Building Obligations – CIB	11/2011	214,704.00		50,328.00	164,376.00	58,717.00	8,431.00
Other Long Term Debt/Liabilities		245,431.00		57,498.00	187,933.00	90,933.00	
Compensated Absences		393,802.00		62,677.00	331,125.00		
Other Post-Employment Benefits (OPEB)		536,573.00		124,740.00	411,833.00		
Net Pension Liability		21,255,000.00	273,000.00		21,528,000.00		
Totals for Debt Entered:		\$29,002,510.00	\$273,000.00	\$900,243.00	\$28,375,267.00	\$905,640.00	\$156,736.00

LEA : 122097203 Morrisville Borough SD

Printed 5/8/2017 4:00:03 PM

General Fund (10)

Section 1: Tuition/Purchased Services as Reported within Expenditure Detail	Amount
Tuition Reported in General Fund Expenditures 1000-560	1,633,317.00
Purchased Services in General Fund Expenditures 1000-594 and 1000-597	
Section 1 Total	\$1,633,317.00

Section 2: Tuition Paid to Institution Types During Fiscal Year	Tuition Paid For Nonspecial Education	Tuition Paid For Special Education	Total
1 1306 Institutions			
2 Institutionalized Children's Programs			
3 Juveniles Incarcerated in Adult Facilities			
4 Residential Treatment Facilities			
5 Other Local Education Agencies	27,750.00	71,888.00	99,638.00
6 Brick and Mortar Charter Schools	203,409.00	260,235.00	463,644.00
7 Cyber Charter Schools	125,476.00		125,476.00
8 Career and Technology Centers	332,156.00	68,289.00	400,445.00
9 Approved Private Schools		438,508.00	438,508.00
10 PA Chartered Schools for the Deaf and Blind		99,015.00	99,015.00
11 Private Residential Rehabilitative Institutions		6,591.00	6,591.00
12 Juvenile Detention Centers			
13 Special Program Jointures			
14 Other Tuition Not Included Elsewhere In This Section			
Section 2 Total	\$688,791.00	\$944,526.00	\$1,633,317.00

LEA : 122097203 Morrisville Borough SD

Printed 5/8/2017 4:00:05 PM

Food Service / Cafeteria Operations Fund (51)

3000 Operation of Non-Instructional Services

Total

100	<u>Personnel Services – Salaries</u>	
100	Personnel Services – Salaries	189,147.00
Total Personnel Services – Salaries		\$189,147.00
200	<u>Personnel Services – Employee Benefits</u>	
210	Group Insurance – Contracted Provider	24,988.00
220	Social Security Contributions	22,048.00
Total Personnel Services – Employee Benefits		\$47,036.00
300	<u>Purchased Professional and Technical Services</u>	
330	Other Professional Services	37,061.00
Total Purchased Professional and Technical Services		\$37,061.00
500	<u>Other Purchased Services</u>	
520	Insurance – General	2,385.00
Total Other Purchased Services		\$2,385.00
600	<u>Supplies</u>	
610	General Supplies	13,145.00
630	Food	163,626.00
Total Supplies		\$176,771.00
700	<u>Property</u>	
740	Depreciation	3,021.00
Total Property		\$3,021.00
800	<u>Other Objects</u>	
810	Dues and Fees	179.00
Total Other Objects		\$179.00
Total 3000 Operation of Non-Instructional Services		\$455,600.00

LEA : 122097203 Morrisville Borough SD

Printed 5/8/2017 4:00:05 PM

Food Service / Cafeteria Operations Fund (51)

3100 Food Services	<u>Elementary</u>	<u>Secondary</u>	<u>Federal</u>	<u>Total</u>
100 <u>Personnel Services – Salaries</u>				
100 Personnel Services – Salaries				189,147.00
Total Personnel Services – Salaries				\$189,147.00
200 <u>Personnel Services – Employee Benefits</u>				
210 Group Insurance – Contracted Provider				24,988.00
220 Social Security Contributions				22,048.00
Total Personnel Services – Employee Benefits				\$47,036.00
300 <u>Purchased Professional and Technical Services</u>				
330 Other Professional Services				37,061.00
Total Purchased Professional and Technical Services				\$37,061.00
500 <u>Other Purchased Services</u>				
520 Insurance – General				2,385.00
Total Other Purchased Services				\$2,385.00
600 <u>Supplies</u>				
610 General Supplies				13,145.00
630 Food				163,626.00
Total Supplies				\$176,771.00
700 <u>Property</u>				
740 Depreciation				3,021.00
Total Property				\$3,021.00
800 <u>Other Objects</u>				
810 Dues and Fees				179.00
Total Other Objects				\$179.00
Total 3100 Food Services				\$455,600.00

LEA : 122097203 Morrisville Borough SD

Printed 5/8/2017 4:00:04 PM

Internal Service Fund (60)

2000 Support Services

Total

200 Personnel Services – Employee Benefits

270 Group Insurance – Self-Insurance	1,197,526.00
--------------------------------------	--------------

Total Personnel Services – Employee Benefits	\$1,197,526.00
---	-----------------------

300 Purchased Professional and Technical Services

310 Official / Administrative Services	126,961.00
--	------------

Total Purchased Professional and Technical Services	\$126,961.00
--	---------------------

Total 2000 Support Services	\$1,324,487.00
------------------------------------	-----------------------

LEA : 122097203 Morrisville Borough SD

Printed 5/8/2017 4:00:04 PM

Internal Service Fund (60)

2300 Support Services – Administration	<u>Elementary</u>	<u>Secondary</u>	<u>Federal</u>	<u>Total</u>
200 <u>Personnel Services – Employee Benefits</u>				
270 Group Insurance – Self-Insurance				1,197,526.00
Total Personnel Services – Employee Benefits				\$1,197,526.00
300 <u>Purchased Professional and Technical Services</u>				
310 Official / Administrative Services				126,961.00
Total Purchased Professional and Technical Services				\$126,961.00
Total 2300 Support Services – Administration				\$1,324,487.00

LEA : 122097203 Morrisville Borough SD

Printed 5/8/2017 4:00:04 PM

Internal Service Fund (60)

2390 Other Administration Services	<u>Elementary</u>	<u>Secondary</u>	<u>Federal</u>	<u>Total</u>
200 <u>Personnel Services – Employee Benefits</u>				
270 Group Insurance – Self-Insurance				1,197,526.00
Total Personnel Services – Employee Benefits				\$1,197,526.00
300 <u>Purchased Professional and Technical Services</u>				
310 Official / Administrative Services				126,961.00
Total Purchased Professional and Technical Services				\$126,961.00
Total 2390 Other Administration Services				\$1,324,487.00

	<u>Food Service(51)</u>	<u>Child Care Operations(52)</u>	<u>Other Enterprise(58)</u>	<u>Internal Service(60)</u>	<u>Total</u>
2000 <u>Support Services</u>					
2300 Support Services - Administration				1,324,487.00	1,324,487.00
Total Support Services				\$1,324,487.00	\$1,324,487.00
3000 <u>Operation of Non-Instructional Services</u>					
3100 Food Services	455,600.00				455,600.00
Total Operation of Non-Instructional Services	\$455,600.00				\$455,600.00
TOTAL ACTUAL EXPENDITURES & OTHER FINANCING USES	\$455,600.00			\$1,324,487.00	\$1,780,087.00